



V.11  
DECK HARDWARE  
PORTLIGHTS & HATCHES

---

*RUTGERSON*  
Best in action





You might think it started in 1976.  
I would rather say the late 40s or early 50s.

**A** few nautical miles west of Marstrand there's a small island with a light house called *Pater Noster*. It was built in 1868. Pater Noster is the latin name of the prayer *Our Father* and its origin is much older than the light house itself. In the old days when seamen and fishermen approached Marstrand, they said that prayer in hope of reaching their destination.

Marstrand is a fabulous sailing venue but it can quickly turn dangerous with hard winds, rough seas, a strong current and thousands of treacherous rocks.

This is where I grew up in the 40s and 50s, this is where I learned to both love and fear the sea, this



is where the Rutgeron philosophy was founded; we know what boat fittings must handle during the worst of circumstances and that's why our core values are innovation, performance and reliability.

In 1976 I invented the revolutionary *Super Ring* and founded Rutgeron Marin. I wanted to offer modern, user-friendly and reliable boat fittings to sailors all over the world. Today, after 40 years, these values are still true and we will continue to develop smart and innovative solutions for many years to come.

At Rutgeron we don't compromise about quality. Never have. Never will. You just don't do that if you're born and raised in a place like Marstrand.

**Göran Rutgeron**  
FOUNDER AND OWNER

## CONTENTS

<b>PORTLIGHTS</b> .....	<b>4</b>	<b>SNATCH BLOCK</b> .....	<b>40</b>
Oval Portlights .....	6	<b>LOW FRICTION RINGS</b> .....	<b>41</b>
Elliptical Portlights .....	8	<b>STAINLESS STEEL FITTINGS</b> .....	<b>42</b>
Rectangular Portlights .....	10	Padeyes .....	42
Curved-rectangular Portlights .....	12	Snap Shackles .....	42
Round Portlights .....	13	Pelican Hooks .....	42
Customised Portlights .....	14	<b>ROPE CLUTCHES</b> .....	<b>43</b>
Inner Frames .....	15	RC75 .....	43
Aluminum Templates .....	16	RC120 .....	44
Acrylic Glass .....	16	RC2000 .....	45
Mosquito Net .....	17	Accessories .....	45
Spare Parts.....	17	<b>DECK FILLERS</b> .....	<b>46</b>
<b>HATCHES</b> .....	<b>18</b>	Accessories .....	47
Classic Hatches .....	20	<b>DECK ORGANISERS</b> .....	<b>48</b>
Master Flush Hatches .....	21	Transatlantic Organisers .....	48
Escape Hatches .....	22	Special Bolt Set.....	48
Accessories .....	23	ROC Organisers .....	49
<b>BLOCKS</b> .....	<b>26</b>	<b>TRACK SYSTEMS</b> .....	<b>50</b>
RAW Blocks .....	27	Mainsheet Systems .....	50
RAW Cheek Block.....	32	Genoa Systems .....	57
RAW Toggle-head Blocks.....	33	Self-tacking Jib Systems.....	60
RAW Blocks with Snap Shackles .....	33		
ROC Blocks .....	34		
ROC Block Becket .....	35		
ROC Block Ball Joint Stand-up.....	35		
Spring Stand-ups .....	36		
Mainsheet Tackles & Lines .....	36		
Chafe Covers .....	37		
Wire Blocks .....	37		
Deck Blocks .....	37		
ROC Deck Blocks .....	38		
Foot Blocks .....	39		



Photo: Curtesy ©CBreschi

Portlights  
Hatches  
Blocks & Low Friction Rings  
Stainless Steel Fittings  
Rope Clutches  
Deck Fillers  
Deck Organisers  
Track Systems



# PORTLIGHTS

## PORTLIGHTS

Rutgerson portlights are famous for their seamless design as well as extensive range of shapes and sizes. Portlights let light and air into the boat and keep water and moisture out. They also make a strong visual statement about the quality of the craft.

The Rutgerson portlights are deep drawn in Swedish stainless steel 316L and polished to a high lustre. The seamless construction ensures that the strength and elegant design will last far longer than conventional alternatives.

The tinted acrylic glass is either 10 or 15mm thick and the window area of Rutgerson portlights is in general largest on the market. An essential factor is the seal around the opening window and frame. The most common materials used by other brands are cellular rubber or compressible foam, but they tend to disintegrate gradually over the years. These materials are also vulnerable to distortion due to the high pressure on the seal when the portlight is closed. Rutgerson portlights are equipped with a high quality silicone rubber gasket, which is very durable and thus prevents leakage.

The locking mechanism consists of Delrin spiral knobs, designed so that the closing pressure can be varied.

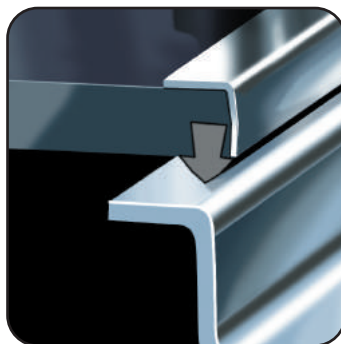
We offer a wide range of inner frames including frames made of stainless steel, which is completely unique. Inner frames are always included and the alternatives are chromed ABS (CH), Off-White ABS (OW) or Stainless Steel (RF).

The portlights are available in oval, elliptical, rectangular, curved-rectangular and round shapes in both fixed and opening models. All portlights are available in several different depths. They have a simple, fast installation and each product comes with a cut-out template on the packaging. A range of optional mosquito nets is also available.

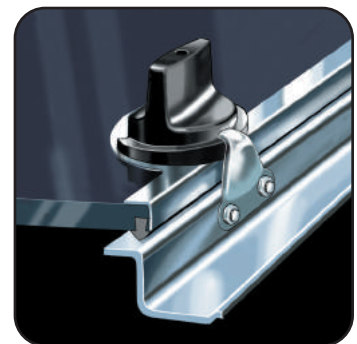
All portlights may be used in Area I, IIb, III & IV as specified in EN ISO 12216 on Recreational Craft of Any Design Category on Any Boat Type according to Council Directive 2013/53/EU



The hinges are made of polyamide and have a friction function, which enables the glass to stay open in different positions.



The seal is made of silicon rubber, which is the most durable solution and gives the portlight maximum performance. Additionally, the seal is incorporated into the acrylic glass.



The acetal knobs are designed so that the closing pressure can be varied.

## Portlight shapes



### Oval Portlight

403x204 mm



### Elliptical Portlight

450x195 mm  
485x225 mm



### Rectangular Portlight

370x164 mm  
402x195 mm  
428x179 mm  
700x191 mm



### Curved-rectangular Portlight

405x140 mm  
440x180 mm



### Round Portlight

250 mm

# PORTLIGHTS

## Oval Portlights



Stainless steel reinforcement



Opening

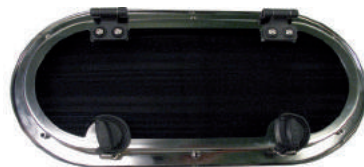


Fixed

Part no	Glass	Type	Function	Inner frame	Rec. hull thickness [mm]	Depth [mm]	Weight [gr]	Glass Thickness [mm]
Oval Portlight 403 x 204 mm Opening acrylic with exclusive stainless reinforced glass frame								
A1120-200RF	Tinted	SS reinforcement	Opening	Stainless steel	8 - 14	14	1910	10
A1120-200CH	Tinted	SS reinforcement	Opening	Chrome	8 - 33	14	1990	10
A1120-200OW	Tinted	SS reinforcement	Opening	Off white	8 - 33	14	1990	10
A1130-200RF	Tinted	SS reinforcement	Opening	Stainless steel	15 - 27	27	2050	10
A1130-200CH	Tinted	SS reinforcement	Opening	Chrome	27 - 46	27	2130	10
A1130-200OW	Tinted	SS reinforcement	Opening	Off white	27 - 46	27	2130	10
A1150-200RF	Tinted	SS reinforcement	Opening	Stainless steel	28 - 47	47	2150	10
A1150-200CH	Tinted	SS reinforcement	Opening	Chrome	47 - 66	47	2060	10
A1150-200OW	Tinted	SS reinforcement	Opening	Off white	47 - 66	47	2060	10
Oval Portlight 403 x 204 mm Opening acrylic								
A1320-200RF	Tinted	Regular	Opening	Stainless steel	8 - 14	14	1640	15
A1320-200CH	Tinted	Regular	Opening	Chrome	8 - 33	14	1710	15
A1320-200OW	Tinted	Regular	Opening	Off white	8 - 33	14	1710	15
A1330-200RF	Tinted	Regular	Opening	Stainless steel	15 - 27	27	1780	15
A1330-200CH	Tinted	Regular	Opening	Chrome	27 - 46	27	1860	15
A1330-200OW	Tinted	Regular	Opening	Off white	27 - 46	27	1860	15
A1350-200RF	Tinted	Regular	Opening	Stainless steel	28 - 47	47	1990	15
A1350-200CH	Tinted	Regular	Opening	Chrome	47 - 66	47	2060	15
A1350-200OW	Tinted	Regular	Opening	Off white	47 - 66	47	2060	15
Oval Portlight 403 x 204 mm Fixed acrylic								
A1125-200RF	Tinted	Regular	Fixed	Stainless steel	8 - 14	14	1340	10
A1125-200OW	Tinted	Regular	Fixed	Off white	8 - 33	14	1500	10
A1135-200RF	Tinted	Regular	Fixed	Stainless steel	15 - 27	27	1450	10
A1135-200OW	Tinted	Regular	Fixed	Off white	27 - 46	27	1600	10
A1155-200RF	Tinted	Regular	Fixed	Stainless steel	28 - 47	47	1660	10
A1155-200OW	Tinted	Regular	Fixed	Off white	47 - 66	47	1800	10
Oval Engine Room Ventilation 403 x 204 mm				Air inlet area				
A1495-200				26 000 mm <sup>3</sup>	8 - 70		1670	

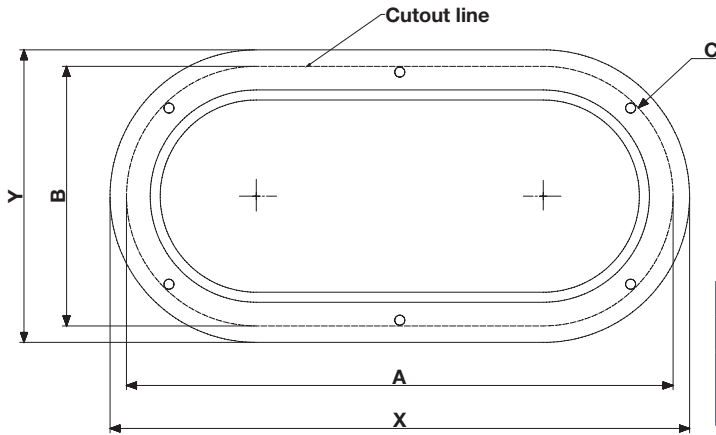


Engine room ventilation



Stainless steel reinforcement means that there is a frame on the inside of the acrylic glass that increases the rigidity of the portlight. It also gives the portlight a high-class impression when viewed from the inside.

## Oval Cutout



Outer dimensions X x Y [mm]	Cut-out dimensions [mm]		
	A	B	C Radius
Oval Portlight Dimension Guide			
403 x 204	381	181	91



Photo: Courtesy of Nimbus Boats Sweden AB - Nimbus 405 Coupe

# PORTLIGHTS

## Elliptical Portlights



Stainless steel reinforcement



Opening



Fixed

Part no	Glass	Type	Function	Inner frame	Rec. hull thickness [mm]	Depth [mm]	Weight [gr]	Glass Thickness [mm]
Elliptical Portlight 450 x 195 mm Opening acrylic with exclusive stainless reinforced glass frame								
A3120-190RF	Tinted	SS reinforcement	Opening	Stainless steel	8 - 15	15	1850	10
A3120-190CH	Tinted	SS reinforcement	Opening	Chrome	8 - 32	15	1750	10
A3120-190OW	Tinted	SS reinforcement	Opening	Off white	8 - 32	15	1750	10
A3130-190RF	Tinted	SS reinforcement	Opening	Stainless steel	16 - 27	27	2060	10
A3130-190CH	Tinted	SS reinforcement	Opening	Chrome	27 - 44	27	1950	10
A3130-190OW	Tinted	SS reinforcement	Opening	Off white	27 - 44	27	1950	10
Elliptical Portlight 450 x 195 mm Opening acrylic								
A3320-190RF	Tinted	Regular	Opening	Stainless steel	8 - 15	15	1600	15
A3320-190CH	Tinted	Regular	Opening	Chrome	8 - 32	15	1500	15
A3320-190OW	Tinted	Regular	Opening	Off white	8 - 32	15	1500	15
A3330-190RF	Tinted	Regular	Opening	Stainless steel	16 - 27	27	1800	15
A3330-190CH	Tinted	Regular	Opening	Chrome	27 - 44	27	1700	15
A3330-190OW	Tinted	Regular	Opening	Off white	27 - 44	27	1700	15
Elliptical Portlight 450 x 195 mm Fixed acrylic								
A3125-190RF	Tinted	Regular	Fixed	Stainless steel	8 - 15	15	1350	10
A3125-190OW	Tinted	Regular	Fixed	Off white	8 - 32	15	1500	10
A3135-190RF	Tinted	Regular	Fixed	Stainless steel	16 - 27	27	1470	10
A3135-190OW	Tinted	Regular	Fixed	Off white	27 - 44	27	1750	10
Elliptical Engine Room Ventilation 450 x 195 mm				Air inlet area				
A3495-190				21 000 mm <sup>3</sup>	8 - 70		1670	



Engine room ventilation



Photo: Courtesy of Viknes Boats





Stainless steel reinforcement



Opening



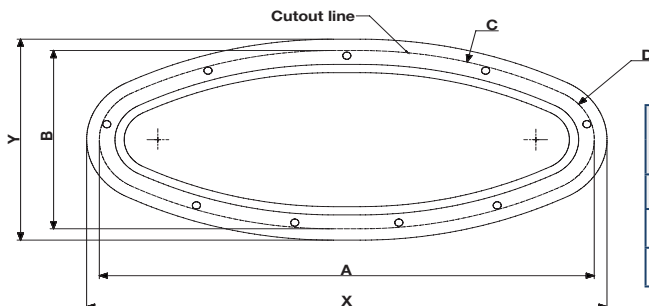
Fixed

Part no	Glass	Type	Function	Inner frame	Rec. hull thickness [mm]	Depth [mm]	Weight [gr]	Glass Thickness [mm]
Elliptical Portlight 485 x 225 mm Opening acrylic with exclusive stainless reinforced glass frame								
A3130-220RF	Tinted	SS reinforcement	Opening	Stainless steel	8 - 27	27	2250	10
A3130-220CH	Tinted	SS reinforcement	Opening	Chrome	8 - 54	27	2250	10
A3130-220OW	Tinted	SS reinforcement	Opening	Off white	8 - 54	27	2250	10
A3150-220RF	Tinted	SS reinforcement	Opening	Stainless steel	28 - 47	47	2500	10
A3150-220CH	Tinted	SS reinforcement	Opening	Chrome	47 - 67	47	2290	10
A3150-220OW	Tinted	SS reinforcement	Opening	Off white	47 - 67	47	2290	10
Elliptical Portlight 485 x 225 mm Opening acrylic								
A3330-220RF	Tinted	Regular	Opening	Stainless steel	8 - 27	27	1950	15
A3330-220CH	Tinted	Regular	Opening	Chrome	8 - 54	27	1950	15
A3330-220OW	Tinted	Regular	Opening	Off white	8 - 54	27	1950	15
A3350-220RF	Tinted	Regular	Opening	Stainless steel	28 - 47	47	2050	15
A3350-220CH	Tinted	Regular	Opening	Chrome	47 - 67	47	2050	15
A3350-220OW	Tinted	Regular	Opening	Off white	47 - 67	47	2050	15
Elliptical Portlight 485 x 225 mm Fixed acrylic								
A3135-220RF	Tinted	Regular	Fixed	Stainless steel	8 - 15	27	1700	10
A3155-220RF	Tinted	Regular	Fixed	Stainless steel	28 - 47	47	1850	10
Elliptical Engine Room Ventilation 485 x 225 mm				Air inlet area				
A3395-220				27 500 mm <sup>3</sup>	8 - 70		2100	



Engine room ventilation

## Elliptical Cutout



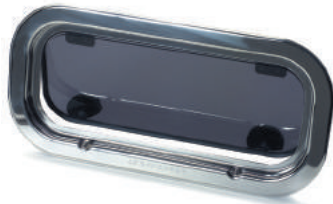
Outer dimensions X x Y [mm]	Cut-out dimensions [mm]			
	A	B	C Radius	D Radius
Elliptical Portlight Dimension Guide				
450 x 195	428	173	389	51
485 x 225	467	205	390	48

# PORTLIGHTS

## Rectangular Portlights



Stainless steel reinforcement



Opening



Fixed

Part no	Glass	Type	Function	Inner frame	Rec. hull thickness [mm]	Depth [mm]	Weight [gr]	Glass Thickness [mm]
Rectangular Portlight 402 x 195 mm Opening acrylic with exclusive stainless reinforced GLASS FRAME								
A2120-200CH	Tinted	SS reinforcement	Opening	Chrome	8 - 43	14	1810	10
A2120-200OW	Tinted	SS reinforcement	Opening	Off white	8 - 43	14	1810	10
A2130-200CH	Tinted	SS reinforcement	Opening	Chrome	26 - 55	26	2040	10
A2130-200OW	Tinted	SS reinforcement	Opening	Off white	26 - 55	26	2040	10
Rectangular Portlight 402 x 195 mm Opening acrylic								
A2320-200CH	Tinted	Regular	Opening	Chrome	8 - 43	14	1600	15
A2320-200OW	Tinted	Regular	Opening	Off white	8 - 43	14	1600	15
A2330-200CH	Tinted	Regular	Opening	Chrome	26 - 55	26	1740	15
A2330-200OW	Tinted	Regular	Opening	Off white	26 - 55	26	1740	15
Rectangular Portlight 402 x 195 mm Fixed acrylic								
A2125-200CH	Tinted	Regular	Fixed	Chrome	8 - 43	14	1940	10
A2125-200OW	Tinted	Regular	Fixed	Off white	8 - 43	14	1940	10
A2135-200CH	Tinted	Regular	Fixed	Chrome	26 - 55	26	1990	10
A2135-200OW	Tinted	Regular	Fixed	Off white	26 - 55	26	1990	10



Opening

Part no	Glass	Type	Function	Inner frame	Rec. hull thickness [mm]	Depth [mm]	Weight [gr]	Glass Thickness [mm]
Rectangular Portlight 428 x 179 mm Opening acrylic								
A2320-180CH	Tinted	Regular	Opening	Chrome	8 - 43	14	1650	10
A2320-180OW	Tinted	Regular	Opening	Off white	8 - 43	14	1650	10
A2330-180CH	Tinted	Regular	Opening	Chrome	26 - 55	26	1650	10
A2330-180OW	Tinted	Regular	Opening	Off white	26 - 55	26	1650	10



Opening

Part no	Glass	Type	Function	Inner frame	Rec. hull thickness [mm]	Depth [mm]	Weight [gr]	Glass Thickness [mm]
Rectangular Portlight 700 x 191 mm Opening acrylic								
A2320-190CH	Tinted	Regular	Opening	Chrome	8 - 43	14	2250	10
A2320-190OW	Tinted	Regular	Opening	Off white	8 - 43	14	2250	10



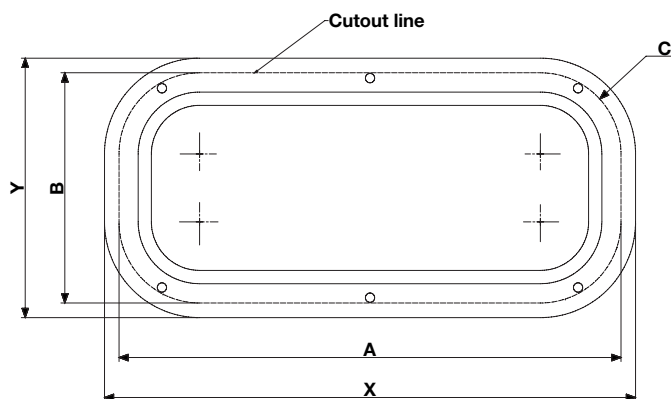
Opening



Fixed

Part no	Glass	Type	Function	Inner frame	Rec. hull thickness [mm]	Depth [mm]	Weight [gr]	Glass Thickness [mm]
Rectangular Portlight 370 x 164 mm Opening acrylic								
A2320-170RF	Tinted	Regular	Opening	Stainless steel	8 - 20	14	1530	15
A2320-170OW	Tinted	Regular	Opening	Off white	8 - 46	14	1580	15
A2340-170RF	Tinted	Regular	Opening	Stainless steel	21 - 40	40	1790	15
A2340-170OW	Tinted	Regular	Opening	Off white	21 - 66	40	1750	15
Rectangular Portlight 370 x 164 mm Fixed acrylic								
A2125-170RF	Tinted	Regular	Fixed	Stainless steel	8 - 20	14	1010	10
A2125-170OW	Tinted	Regular	Fixed	Off white	8 - 43	14	1200	10
A2145-170RF	Tinted	Regular	Fixed	Stainless steel	21 - 40	40	1380	10
A2145-170OW	Tinted	Regular	Fixed	Off white	28 - 66	40	1450	10

## Rectangular Cutout



Outer dimensions X x Y [mm]	Cut-out dimensions [mm]		
	A	B	C Radius
Rectangular Portlight Dimension Guide			
370 x 164	347	142	61
402 x 195	380	173	61
428 x 179	406	157	61
700 x 191	678	169	61



Photo: Curtesy by Christophe Breschi

# PORTLIGHTS

## Curved-rectangular Portlights

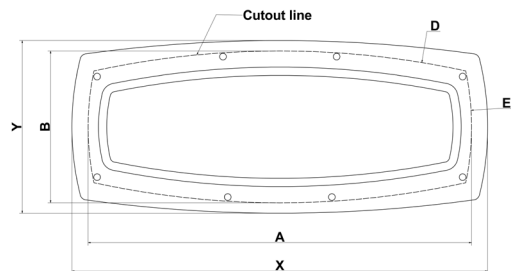
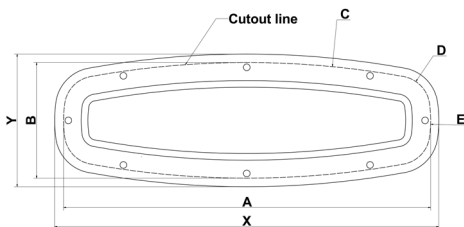


Part no	Glass	Type	Function	Inner frame	Rec. hull thickness [mm]	Depth [mm]	Weight [gr]	Glass Thickness [mm]
Curved-Rectangular Portlight 405 x 140 mm Opening acrylic								
A5320-140OW	Tinted	Regular	Opening	Off white ABS	8 - 46	14	1200	10



Part no	Glass	Type	Function	Inner frame	Rec. hull thickness [mm]	Depth [mm]	Weight [gr]	Glass Thickness [mm]
Curved-Rectangular Portlight 440 x 180 mm Opening acrylic								
A5320-180OW	Tinted	Regular	Opening	Off white ABS	8 - 46	14	1950	15

## Curved-Rectangular Cutout



Outer dimensions X x Y [mm]	Cut-out dimensions [mm]				
	A	B	C Radius	D Radius	E Radius
Rectangular Portlight dimension guide					
405 x 140	387	122	926	33,5	126
439 x 182	405	160		924	283



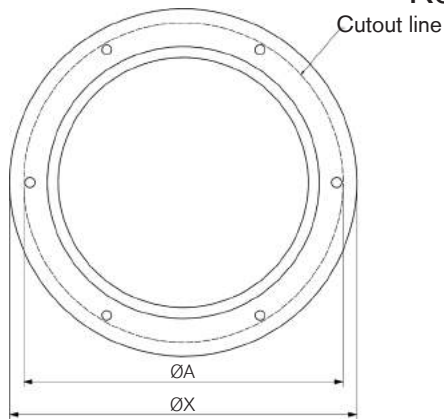
## Round Portlights



Opening

Part no	Glass	Type	Function	Inner frame	Rec. hull thickness [mm]	Depth [mm]	Weight [gr]	Glass Thickness [mm]
Round Portlight 250 mm Opening acrylic								
A4320-2500W	Tinted	Regular	Opening	Off white	8 - 33	20	2120	15
A4330-2500W	Tinted	Regular	Opening	Off white	27 - 46	30	2320	15

## Round Cutout



Outer dimensions X [mm]	Cut-out dimensions A [mm]
Round Portlight Dimension Guide	
250	230



Photo: Courtesy of Hallberg-Rassy

# PORTLIGHTS

## Customised Portlights

Due to our flexible production facilities and knowledgeable staff, there are endless possibilities for customised portlights. Through the years we have produced numerous unique models for boats such as Moody 41, Elan, Storebro and many more (see pictures). It is possible to change shape, colour of the glass, colour of the stainless steel frame or innerframe and constructional alternatives such as the opening mechanism or hinges. We would be happy to discuss any ideas that our customers might have concerning new designs.



Made for Moody - Germany



Made for Nimbus - Sweden



Made for Moody - Germany



Made for Paragon - Sweden

## Inner Frames



Oval



Rectangular



Elliptical



Round

Part no	Product description	Function	Inner frame	Fits portlights size [mm]	Size [mm]
<b>Oval Inner Frames</b>					
A1480-20RF	Inner frame Stainless steel for Opening Oval Portlight	Opening	Stainless steel	403 x 204	410 x 207
A1480-20CH	Inner frame Chrome for Opening Oval Portlight	Opening	Chrome	403 x 204	414 x 213
A1480-200W	Inner frame Off white for Opening Oval Portlight	Opening	Off white	403 x 204	414 x 213
A1485-20RF	Inner frame Stainless steel for Fixed Oval Portlight	Fixed	Stainless steel	403 x 204	410 x 207
A1485-200W	Inner frame Off white for Fixed Oval Portlight	Fixed	Off white	403 x 204	414 213
<b>Rectangular Inner Frames</b>					
A2480 -17RF	Inner frame Stainless steel for Rectangular Opening Portlight	Opening	Stainless steel	370 x 164	367 x 163
A2480-17OW	Inner frame Off white for Rectangular Opening Portlight	Opening	Off white	370 x 164	379 x 175
A2485-17RF	Inner frame Stainless steel for Rectangular Fixed Portlight	Fixed	Stainless steel	370 x 164	367 x 163
A2485-17OW	Inner frame Off white for Rectangular Fixed Portlight	Fixed	Off white	370 x 164	379 x 175
A2480-18CH	Inner frame Chrome for Rectangular Opening Portlight	Opening	Chrome	428 x 179	440 x 188
A2480-18OW	Inner frame Off white for Rectangular Opening Portlight	Opening	Off white	428 x 179	440 x 188
A2480-19CH	Inner frame Chromed for Rectangular Opening Portlight	Opening	Chrome	700 x 191	712 x 202
A2480-19OW	Inner frame Off white for Rectangular Opening Portlight	Opening	Off white	700 x 191	712 x 202
A2480-20CH	Inner frame Chromed for Rectangular Opening Portlight	Opening	Chrome	402 x 195	408 x 201
A2480-200W	Inner frame Off white for Rectangular Opening Portlight	Opening	Off white	402 x 195	408 x 201
A2485-20CH	Inner frame Chromed for Rectangular Fixed Portlight	Fixed	Chrome	402 x 195	408 x 201
A2485-200W	Inner frame Off white for Rectangular Fixed Portlight	Fixed	Off white	402 x 195	408 x 201
<b>Elliptical Inner Frames</b>					
A3480-19RF	Inner frame Stainless steel for Elliptical Opening Portlight	Opening	Stainless steel	450 x 195	455 x 198
A3480-19CH	Inner frame Chromed for Elliptical Opening Portlight	Opening	Chrome	450 x 195	465 x 210
A3480-19OW	Inner frame Off white for Elliptical Opening Portlight	Opening	Off white	450 x 195	465 x 210
A3480-22RF	Inner frame Stainless steel for Elliptical Opening Portlight	Opening	Stainless steel	485 x 225	496 x 323
A3480-22CH	Inner frame Chromed for Elliptical Opening Portlight	Opening	Chrome	485 x 225	510 x 245
A3480-22OW	Inner frame Off white for Elliptical Opening Portlight	Opening	Off white	485 x 225	510 x 245
A3485-19RF	Inner frame Stainless steel for Elliptical Fixed Portlight	Fixed	Stainless steel	450 x 195	455 x 198
A3485-19OW	Inner frame Off white for Elliptical Fixed Portlight	Fixed	Off white	450 x 195	455 x 198
A3485-22RF	Inner frame Stainless steel for Elliptical Fixed Portlight	Fixed	Stainless steel	485 x 225	496 x 232
<b>Round Inner Frames</b>					
A4480-25OW	Inner frame Off-white for Round Opening Portlight	Opening	Off white	250	261
<b>Curved-Rectangular Inner Frames</b>					
A5480-14OW	Inner frame Off white for Curved-Rectangular Opening Portlight	Opening	Off white	405 x 140	413 x 148
A5480-18OW	Inner frame Off white for Curved-Rectangular Opening Portlight	Opening	Off white	440 x 180	452 x 195

# PORTLIGHTS

## Aluminum Templates



A3999-199  
A3999-299



A1999-209



A2999-189



A2999-169  
A2999-179  
A2999-199

Part no	Product description	Portlight Size [mm]	Size template [mm]
Aluminum templates			
A1999-209	Template for Oval Portlight	403 x 204	420 x 250
A2999-169	Template for Rectangular Portlight	370 x 164	480 x 273
A2999-179	Template for Rectangular Portlight	428 x 179	506 x 257
A2999-189	Template for Rectangular Portlight	700 x 191	725 x 215
A2999-199	Template for Rectangular Portlight	402 x 195	460 x 252
A3999-199	Template for Elliptical Portlight	450 x 195	495 x 240
A3999-229	Template for Elliptical Portlight	485 x 225	533 x 271

## Acrylic Glass

Tinted acrylic glass with integrated silicone rubber seal. Opening knobs included.



A1300-200



A2300-200

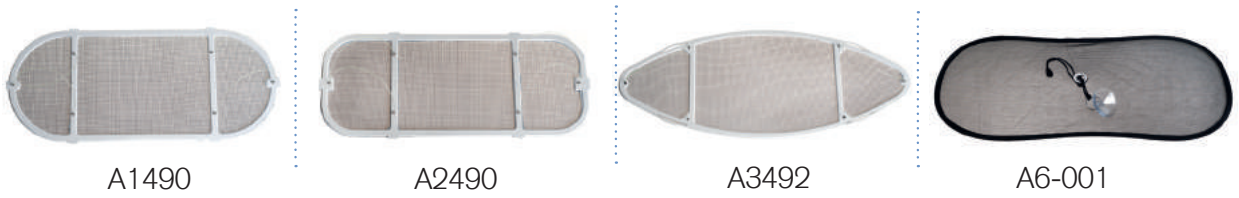


A3300-220

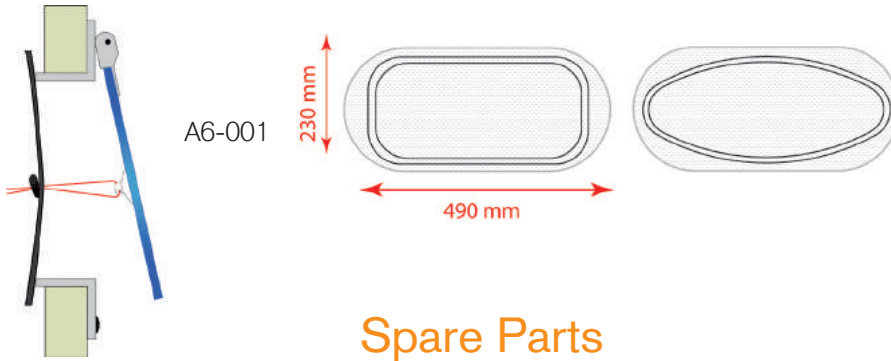
Part no	Product description	Portlight size [mm]	Glass size [mm]	Glass thickness [mm]
Spare Acrylic Glass				
A1300-200	Acrylic glass for Oval Portlight Tinted	403 x 204	350 x 152	15
A2300-170	Acrylic glass for Rectangular Portlight Tinted	370 x 164	315 x 110	15
A2300-180	Acrylic glass for Rectangular Portlight Tinted	428 x 179	375 x 125	10
A2300-190	Acrylic glass for Rectangular Portlight Tinted	700 x 191	645 x 135	10
A2300-200	Acrylic glass for Rectangular Portlight Tinted	402 x 195	350 x 145	15
A3300-190	Acrylic glass for Elliptical Portlight Tinted	450 x 195	400 x 145	15
A3300-220	Acrylic glass for Elliptical Portlight Tinted	485 x 225	435 x 175	15
A4300-250	Acrylic glass for Round Portlight Tinted	250	200	15
A5300-140	Acrylic glass for Curved-Rectangular Portlight Tinted	405 x 140	354 x 89	10
A5300-180	Acrylic glass for Curved-Rectangular Portlight Tinted	440 x 180	387 x 130	10



## Mosquito Net



Part no	Product description	Portlight size [mm]	Size mosquito net
Mosquito net			
A1490	Mosquito net for Oval Portlight	403 x 204	355 x 154
A2490	Mosquito net for Rectangular Portlight	402 x 195	351 x 155
A2497	Mosquito net for Rectangular Portlight	370 x 164	313 x 111
A2498	Mosquito net for Rectangular Portlight	428 x 179	372 x 126
A2499	Mosquito net for Rectangular Portlight	700 x 191	647 x 140
A3492	Mosquito net for Elliptical Portlight	485 x 225	433 x 173
A3498	Mosquito net for Elliptical Portlight	450 x 195	393 x 140
A4490	Mosquito net for Round Portlight	250	198
A5492	Mosquito net for Curved-Rectangular Portlight	405 x 140	350 x 85
A5498	Mosquito net for Curved-Rectangular Portlight	440 x 180	385 x 128
A34925	Fixed Mosquito net for Elliptical Portlight	485 x 225	440 x 170
A34985	Fixed Mosquito net for Elliptical Portlight	450 x 195	395 x 143
A6-001	Universal Mosquito net for portlights	Universal	230 x 490



Part no	Product description
Spare Parts	
A1-001	Opening knob kit
A2-001	Hinge kit



# HATCHES

## HATCHES

Using the best materials available, stainless steel, acrylic and composite, we offer a stunning range of hatches. There are three ranges with different design and application. The hatch frames have no welded seams to maximise the strength and integrity when confronted with the worst elements at sea. All hatches are CE approved for Area 2a.

For detailed information, please see the specific hatch line.



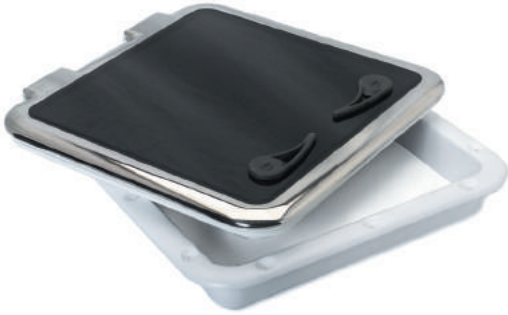
Rutgerson round Classic Hatch



Photo: Courtesy of Christophe Breschi



Photo: Courtesy of Windy Boats



## Classic Hatches

Round Ø500 mm  
Half-round Ø500 mm  
Square 556x556 mm  
Square 456x456 mm  
Rectangular 556x276 mm



## Master Flush Hatches

Square size 10  
Square size 44  
Square size 60



## Multihull Escape Hatch

Rectangular 560x482 mm

# HATCHES

## Classic Hatches

Our Classic Hatch has an elegant, timeless design due to its seamless construction and mirror-polished frame. The hatch lid combines the highest grade Swedish stainless steel and acrylic glass. The frame is made of an extremely strong, UV-resistant composite material. The classic range is designed to compliment the aesthetics of all types of boats.

The hatches are available in different shapes: Round, square, half-round and rectangular. The thickness of the acrylic glass for the Classic Hatch range is 10mm.



H0111-4403



H0211-5203



H0311-0503



H1111-5503



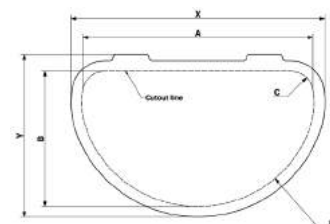
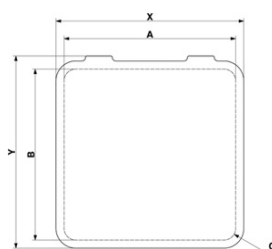
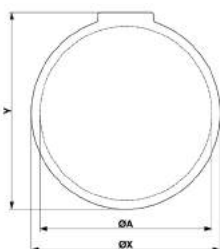
H0411-2503



H1311-0503

Part no	Product description	Outer Dimension X x Y [mm]	Height [mm]	Cut-out dimensions [mm]				Weight [gr]
				A	B	C Radius	D Radius	
Classic Hatch								
H0311-0503	Classic Round Hatch with Off white inner frame	530 x 545	27	Ø482				4200
H1311-0503	Classic Round Hatch with Air vent and Off white inner frame	530 x 545	27	Ø482				4700
H0411-2503	Classic Half-round Hatch with Off white inner frame	570 x 380	27	522	312	51	265	3800
H0111-4403	Classic Square Hatch with Off white inner frame	456 x 456	27	408	408	34,5		4200
H0111-5503	Classic Square Hatch with Off white inner fr-ame	556 x 556	27	508	508	34,5		7000
H1111-4403	Classic Square Hatch with Air vent and Off white inner frame	456 x 456	27	408	408	34,5		4950
H1111-5503	Classic Square Hatch with Air vent and Off white inner frame	556 x 556	27	508	508	34,5		7100
H5111-4403	Classic Square Hatch with Stay and Off white inner frame	456 x 456	27	408	408	34,5		4400
H5111-5503	Classic Square Hatch with Stay and Off white inner frame	556 x 556	27	508	508	34,5		7500
H0211-5203	Classic Rectangular Hatch with Off white inner frame	276 x 556	27	508	228	34,5		4100

### Classic Hatch Cutout





## Master Flush Hatches

The Rutgerston Master Flush hatches are available in sizes 10, 44 and 60. The Master Line has a modern, trendy design that will give the boat a sporty image. As the name implies, the Master Flush hatch Line is flush but requires a recess on the deck. Once the recess is in place, however, the hatch is incredibly easy to install. The hatches consist of a faced, tinted acrylic glass and a frame made out of a high-tech composite. The handles can either be made of stainless steel or composite.

The combination of clever construction and the unique innovation of a composite frame results in the lightest and most durable hatch yet. The thickness of the acrylic glass for the Master Flush Hatch range is 12mm.

The Master Flush hatch conforms to the CE standards EN ISO 12216:2002, EN ISO 9094-1 and EN ISO 9094-2.



H6000-1415



H4400-1415



H1000-1401

Part no	Product description	Height [mm]	Inner / Outer handles	Stay	Outer dimensions X x Y [mm]	Cut-out dimensions [mm]			Weight [gr]
						A	B	C Radius	
<b>Master Flush Hatch</b>									
H1000-1401	Master Flush Hatch 10	31	Composite	Friction hinges	330 x 330	260	260	42,5	2810
H1000-1403	Master Flush Hatch 10	31	Composite / Stainless steel	Friction hinges	330 x 330	260	260	42,5	2810
H1000-1405	Master Flush Hatch 10	31	Stainless steel	Friction hinges	330 x 330	260	260	42,5	2810
H4400-1411	Master Flush Hatch 44	31	Composite	Manual	512 x 512	442	442	42	5350
H4400-1413	Master Flush Hatch 44	31	Composite / Stainless steel	Manual	512 x 512	442	442	42	5350
H4400-1415	Master Flush Hatch 44	31	Stainless steel	Manual	512 x 512	442	442	42	5350
H6000-1411	Master Flush Hatch 60	31	Composite	2 x Manual	577 x 577	506	506	40	7400
H6000-1413	Master Flush Hatch 60	31	Composite / Stainless steel	2 x Manual	577 x 577	506	506	40	7400
H6000-1415	Master Flush Hatch 60	31	Stainless steel	2 x Manual	577 x 577	506	506	40	7400

### Master Flush Hatch Cutout

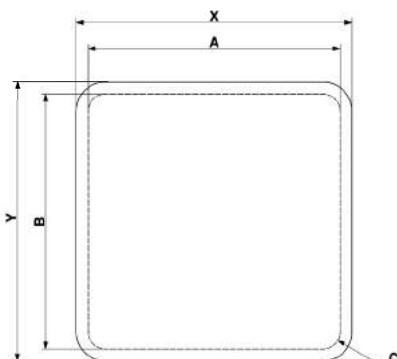


Photo: Courtesy of Bella Boats Oy - Flipper 900 DC.

# HATCHES

## Multihull Escape Hatch

The Rutgerson Escape Hatch is made to be installed on the side of each hull on a catamaran or trimaran to provide a safe and reliable escape in case of capsizing. For safety reasons the hatch can be opened from both the inside and the outside. This is the only certified multihull escape hatch on the market with a flush design, which gives minimal resistance in the water and significantly reduces the pressure on the hatch. No recess or other adaption to the hull is needed.

The 12mm tinted acrylic glass is bolted to its frame and the hatch has double rubber seals for optimal waterproofness. The escape hatch comes with a light composite locking bar which prevents access from the outside when moored and falls off automatically if the boat capsizes. The hatch is CE-certified and approved according to the highest level (Area I) of ISO 12216 international standards for ocean sailing (Category A).



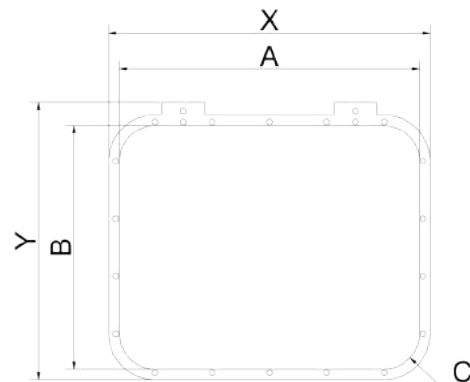
**NOTE:** This hatch should never be left open unattended. When under way, remove the locking bar and keep the hatch closed. Opening the hatch when sailing is strictly forbidden.



### Core benefits

- Open from inside & outside
- Innovative flushed design
- Bolted glass
- Double rubber seals
- Stainless steel
- Made in Sweden

Part no	Product description	Opening measurement [mm]	Outer dimensions X x Y [mm]	Cut out dimension [mm]			Weight [gr]
				A	B	C Radius	
Multihull Escape Hatch							
H2255-5400	Multihull Escape Hatch, Rectangular	482 x 382	460 x 482	523	423	61,5	7500
H2255-5403	Multihull Escape Hatch, Rectangular with OW inner frame	482 x 382	560 x 482	523	423	61,5	8000



## Hatch Accessories



H71-443



H71-553



H72-523



H73-053

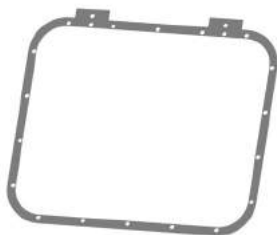


H74-253

Part no	Product description	Color	Dimension [mm]	Weight [gr]
Classic Hatch Inner frames				
H71-443	Inner frame Off white for Classic Hatch 456x456	Off white	456 x 456	350
H71-553	Inner frame Off-White for Classic Hatch 556x556	Off white	556 x 556	420
H72-523	Inner frame Off-white for Classic Hatch 276x556	Off white	276 x 556	380
H73-053	Inner frames Off white for Classic Hatch Ø500	Off white	Ø500	300
H74-253	Inner frame Off-white for Classic Hatch Ø500 Half-round	Off white	Ø500 Half-round	300

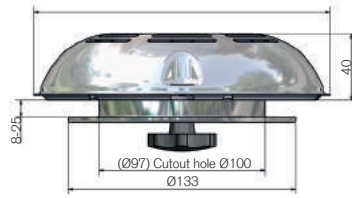


Part no	Product description	Color	Dimensions [mm]	Max depth [mm]	Weight [gr]
Multihull Escape Hatch Inner frames					
H72-453	OW inner frame for Rectangular Multihull Escape Hatch	Off white	560 x 482	100	500



Part no	Product description	Size [mm]
Multihull Escape Hatch Aluminum template		
H72-453	OW inner frame for Rectangular Multihull Escape Hatch	560 x 482 x 4

# HATCHES

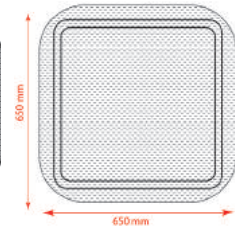
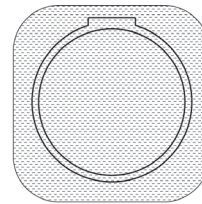


Air vent

Part no	Product description	Dimension [mm]	Height [mm]	Air opening [mm <sup>3</sup> ]	Weight [gr]
Air Vent					
H9-170	Air Vent, Stainless steel	173	40	655	3580



H9-001



Part no	Product description
Universal Mosquito Net	
H9-001	Mosquito net for Hatches Universal



Photo: Courtesy of Catana.





H5-001



H5-002



H8-001



H8-004



H8-011



H8-012



H8-002



H8-003

Part no	Product description
Handles	
H5-001	Composite handle, left
H5-002	Composite handle, right
H8-001	Stainless steel handle, left
H8-002	Stainless steel handle, left*
H8-003	Stainless steel handle, right*
H8-004	Stainless steel handle, right
H8-011	Composite/stainless steel handle, left
H8-012	Composite/stainless steel handle, right

\* With stay attachment

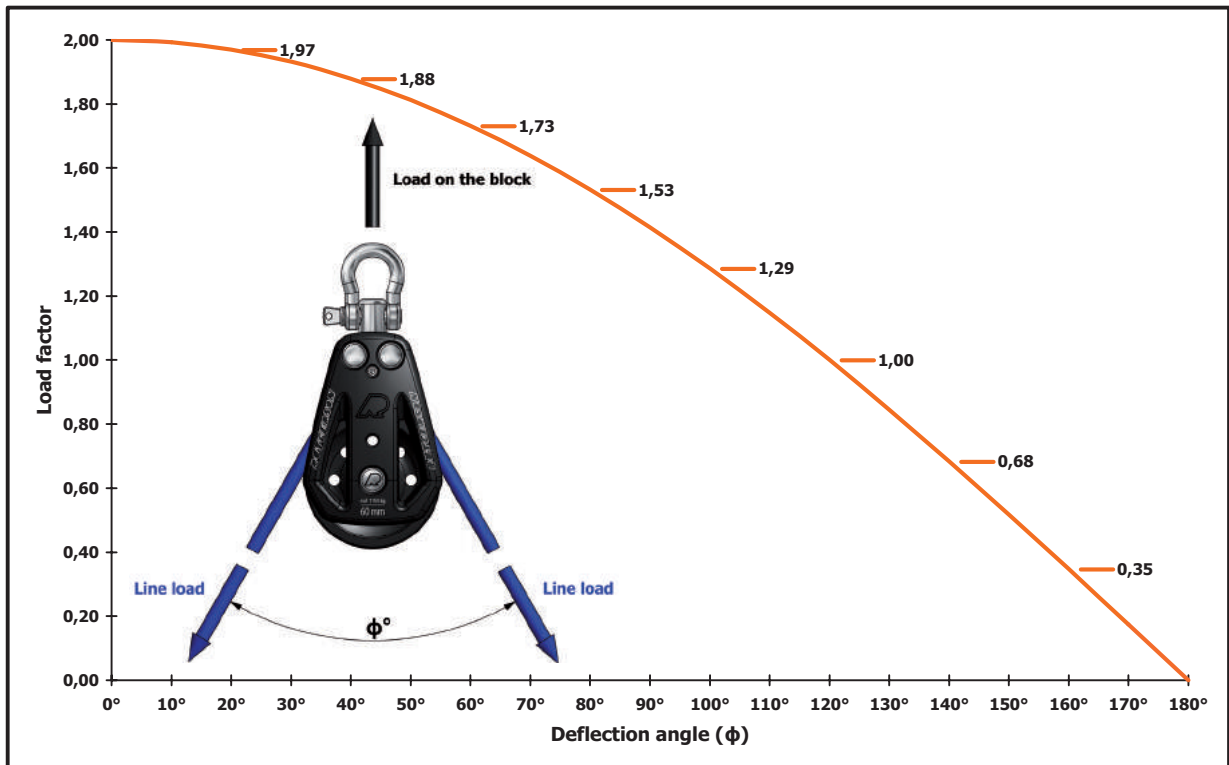


Photo: Courtesy of Catana.

## BLOCKS

Rutgerson has a wide assortment of blocks to choose from suitable for both inshore and offshore sailing, ranging from dinghies to racing yachts and high latitude explorers. All our blocks are made in our factory in Marstrand, Sweden. Extensive in-house sailing experience and innovative design together with high-tech materials and advanced production methods ensures that you can rely on our blocks in all weather conditions.

### How to calculate the load on your block



The block load is determined by the angle and pulling force from the line. If the force is coming from the direct opposite side of the attachment point of the block, then the load factor will be 200%. So if you have 100 kg of force in the lines and the angle between them is 0° then the block load will be 200 kg. And if the line force is 150 kg and the angle is 100° then the block load will be 194 kg ( $150\text{kg} * 1,29 = 193,4$ ). Knowing this you just have to make sure you buy a block with a higher safe working load (see block specification).

## RAW Blocks

Rutgerson's popular plain bearing block has been relaunched under a new name: The RAW Block, an extremely reliable block with the best price on the market considering its strength.

This block is produced from a high-tech composite of such strength that no stainless-steel reinforcement is needed. Consequently, overall weight of the block is reduced.

The block is completely maintenance free, as the spherical plain bearings will never deform under static high loads like ball bearings do.

Furthermore, the RAW Block is available in many different sizes and comes with a range of different fastening alternatives which makes it extremely versatile on the boat.



For stand-up solutions see page. 36.

# DECK HARDWARE

## RAW Blocks 35mm



B300301B



B300302B



B300303B



B300304B



B300305B



B300321B



B300322B



B300323B



B300324B



B300371B



B300372B



B300381B



B300382B



B300383B



B300384B



### Core benefits

- High-tech composite material
- Spherical plain bearings
- Large range
- Extensive range of fastening alternatives
- Adjustable clam cleats
- For Line diameters of 3-8mm
- Made in Sweden

Part no	Product description	A Sheave Ø [mm]	B Length [mm]	C Shackle pin Ø [mm]	Safe working load [kg]	Breaking load [kg]	Line diameter [mm]	Weight [gr]
RAW Block 35mm								
B300301B	RAW Block Single	35	55	4	450	850	3 - 8	50
B300302B	RAW Block Single w becket	35	75	4	450	850	3 - 8	56
B300303B	RAW Block w cam	35	55	4	450	850	3 - 7	100
B300304B	RAW Block Single w cam & becket	35	75	4	450	850	3 - 7	110
B300305B	RAW Block Single for strap head	35	55		450	850	3 - 8	35
B300321B	RAW Block Fiddle	35 / 20	80	4	450	850	3 - 8	62
B300322B	RAW Block Fiddle w becket	35 / 20	100	4	450	850	3 - 8	70
B300323B	RAW Block Fiddle w cam	35 / 20	80	4	450	850	3 - 7	113
B300324B	RAW Block Fiddle w cam & becket	35 / 20	100	4	450	850	3 - 7	121
B300371B	RAW Block Double	35	55	5	450	850	3 - 8	91
B300372B	RAW Block Double w becket	35	75	5	450	850	3 - 8	98
B300381B	RAW Block Triple	35	55	4	450	850	3 - 8	100
B300382B	RAW Block Triple w becket	35	75	4	450	850	3 - 8	107
B300383B	RAW Block Triple w cam	35	55	4	450	850	3 - 7	153
B300384B	RAW Block Triple w cam & becket	35	75	4	450	850	3 - 7	160

Maximum load of cams is 100 kg



## RAW Blocks 50mm



B300501B



B300502B



B300503B



B300504B



B300505B



B300521B



B300522B



B300523B



B300524B



B300571B



B300572B



B300581B



B300582B



B300583B



B300584B



### Core benefits

- High-tech composite material
- Spherical plain bearings
- Large range
- Extensive range of fastening alternatives
- Adjustable clam cleats
- For Line diameters of 4-12mm
- Made in Sweden

Part no	Product description	A Sheave Ø [mm]	B Length [mm]	C Shackle pin Ø [mm]	Safe working load [kg]	Breaking load [kg]	Line diameter [mm]	Weight [gr]
RAW Block 50mm								
B300501B	RAW Block Single	50	80	5	700	1250	4 - 12	116
B300502B	RAW Block Single with becket	50	100	5	700	1250	4 - 12	127
B300503B	RAW Block Single with cam	50	80	5	700	1250	6 - 10	220
B300504B	RAW Block Single with cam & becket	50	100	5	700	1250	6 - 10	231
B300505B	RAW Block Single for strap head	50	80		700	1250	4 - 12	80
B300521B	RAW Block Fiddle	50 / 25	118	5	700	1250	4 - 12	132
B300522B	RAW Block Fiddle with becket	50 / 25	139	5	700	1250	4 - 12	163
B300523B	RAW Block Fiddle with cam	50 / 25	118	5	700	1250	6 - 10	232
B300524B	RAW Block Fiddle with cam & becket	50 / 25	139	5	700	1250	6 - 10	270
B300571B	RAW Block Double	50	80	6	700	1250	4 - 12	226
B300572B	RAW Block Double with becket	50	100	6	700	1250	4 - 12	236
B300581B	RAW Block Triple	50	80	5	700	1250	4 - 12	205
B300582B	RAW Block Triple with becket	50	100	5	700	1250	4 - 12	225
B300583B	RAW Block Triple with cam	50	80	5	700	1250	6 - 10	300
B300584B	RAW Block Triple with cam & becket	50	100	5	700	1250	6 - 10	310

Maximum load of cams is 160 kg

# DECK HARDWARE

## RAW Blocks 60mm



B300601B



B300602B



B300603B



B300604B



B300605B



B300621B



B300622B



B300623B



B300624B



B300671B



B300672B



B300681B



B300682B



B300683B



B300684B



### Core benefits

- High-tech composite material
- Spherical plain bearings
- Large range
- Extensive range of fastening alternatives
- Adjustable clam cleats
- For line diameters of 6-14mm
- Made in Sweden

Part no	Product description	A Sheave Ø [mm]	B Length [mm]	C Shackle pin Ø [mm]	Safe working load [kg]	Breaking load [kg]	Line diameter [mm]	Weight [gr]
RAW Block 60mm								
B300601B	RAW Block Single	60	94	6	1150	2100	6 - 14	205
B300602B	RAW Block Single with becket	60	118	6	1150	2100	6 - 14	220
B300603B	RAW Block Single with cam	60	94	6	1150	2100	8 - 12	305
B300604B	RAW Block Single with cam & becket	60	118	6	1150	2100	8 - 12	320
B300605B	RAW Block Single for strap head	60	94		1150	2100	6 - 14	154
B300621B	RAW Block Fiddle	60 / 35	142	6	1150	2100	6 - 14	265
B300622B	RAW Block Fiddle with becket	60 / 35	164	6	1150	2100	6 - 14	279
B300623B	RAW Block Fiddle with cam	60 / 35	142	6	1150	2100	8 - 12	370
B300624B	RAW Block Fiddle with cam & becket	60 / 35	164	6	1150	2100	8 - 12	375
B300671B	RAW Block Double	60	94	8	1150	2100	6 - 14	350
B300672B	RAW Block Double with becket	60	118	8	1150	2100	6 - 14	360
B300681B	RAW Block Triple	60	94	6	1150	2100	6 - 14	390
B300682B	RAW Block Triple with becket	60	118	6	1150	2100	6 - 14	404
B300683B	RAW Block Triple with cam	60	94	6	1150	2100	8 - 12	490
B300684B	RAW Block Triple with cam & becket	60	118	6	1150	2100	8 - 12	500

Maximum load of cams is 200 kg.

## RAW Blocks 80mm



B300801B



B300802B



B300805B



B300821B



B300822B



Part no	Product description	A Sheave Ø [mm]	B Length [mm]	C Shackle pin Ø [mm]	Safe working load [kg]	Breaking load [kg]	Line diameter [mm]	Weight [gr]
Block 80mm								
B300801B	RAW Block Single	80	130	10	2000	3600	10 - 16	557
B300802B	RAW Block Single with becket	80	165	10	2000	3600	10 - 16	588
B300805B	RAW Block Single for strap head	80	130		2000	3600	10 - 16	333
B300821B	RAW Block Fiddle	80 / 50	195	10	2000	3600	10 - 16	744
B300822B	RAW Block Fiddle with becket	80 / 50	225	10	2000	3600	10 - 16	750

### Core benefits

- High-tech composite material
- Spherical plain bearings
- Large range
- Extensive range of fastening alternatives
- For line diameters of 10-16mm
- Made in Sweden

## RAW Cheek Blocks



Flat plate



Horizontal plate



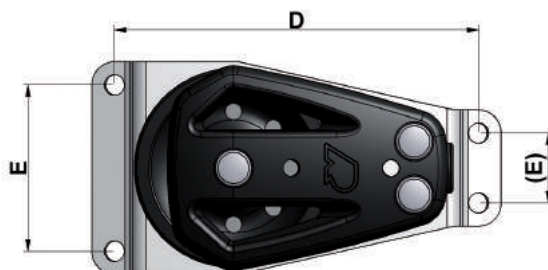
Curved plate

Part no	Product description	A Sheave Ø [mm]	D Length [mm]	E Width [mm]	Safe working load [kg]	Breaking load [kg]	Line diameter [mm]	Weight [gr]
<b>Cheek Blocks Flat Plate</b>								
B300344B	RAW Cheek Block 35mm Flat plate	35	50	48	450	850	3 - 8	70
B300544B	RAW Cheek Block 50mm Flat plate	50	80	45	700	1250	4 - 12	133
B300644B	RAW Cheek Block 60mm Flat plate	60	98	57	800	1600	6 - 14	240
<b>Cheek Blocks Horizontal Plate</b>								
B300345B	RAW Cheek Block 35mm Horizontal plate <sup>1</sup>	35	74	20 / 37	450	850	3 - 8	70
B300545B	RAW Cheek Block 50mm Horizontal plate <sup>1</sup>	50	94	40 / 16	700	1250	4 - 12	133
B300645B	RAW Cheek Block 60mm Horizontal plate <sup>1</sup>	60	110	50 / 21	800	1600	6 - 14	240
<b>Cheek Blocks Curved Plate</b>								
B300346B	RAW Cheek Block 35mm Curved plate <sup>2</sup>	35	50	44	450	850	3 - 8	70
B300546B	RAW Cheek Block 50mm Curved plate <sup>2</sup>	50	79	45	700	1250	4 - 12	133
B300646B	RAW Cheek Block 60mm Curved plate <sup>2</sup>	60	97	55	800	1600	6 - 14	240

M5 mounting screws

<sup>1</sup> Recommended profile radius 190 - 400mm

<sup>2</sup> Recommended profile radius 30 - 50mm





## RAW Toggle-head Blocks



Part no	Product description	A Sheave Ø [mm]	B Length [mm]	C Pin Ø [mm]	D Fork width [mm]	Safe working load [kg]	Breaking load [kg]	Line diameter [mm]	Weight [gr]
<b>Fixed Toggle-head</b>									
B300301BF	RAW Fixed Toggle-head Block 35mm	35	55	6	12	450	850	3 - 8	54
B300501BF	RAW Fixed Toggle-head Block 50mm	50	80	6	12	700	1250	4 - 12	111
B300501BF 14	RAW Fixed Toggle-head Block 50mm	50	80	8	14	700	1250	4 - 12	120
B300601BF 12	RAW Fixed Toggle-head Block 60mm	60	94	6	12	1150	2100	6 - 14	183
B300601BF 14	RAW Fixed Toggle-head Block 60mm	60	94	8	14	1150	2100	6 - 14	190
B300801BF	RAW Fixed Toggle-head Block 80mm	80	130	8	14	2000	3600	10 - 16	390
<b>Toggle-head</b>									
B300301BT	RAW Toggle-head Block 35mm	35	55	6	12	450	850	3 - 8	61
B300501BT	RAW Toggle-head Block 50mm	50	80	6	12	700	1250	4 - 12	124
B300501BT 14	RAW Toggle-head Block 50mm	50	80	8	14	700	1250	4 - 12	130
B300601BT	RAW Toggle-head Block 60mm	60	94	6	12	1150	2100	6 - 14	197
B300601BT 14	RAW Toggle-head Block 60mm	60	94	8	14	1150	2100	6 - 14	206
B300801BT	RAW Toggle-head Block 80mm	80	130	8	14	2000	3600	10 - 16	443

## RAW Blocks with Snap Shackle Fastening

The RAW blocks from Rutgerson are available with snap shackles. Simply add the ending S to the standard block article number. For example B300501BS. Note that the safe working load and breaking load differ when the block is fitted with a snap shackle.

Part no	Product description	A Sheave Ø [mm]	Safe working load [kg]	Breaking load [kg]
<b>Snap Shackles fastening</b>				
B3003XXBS	RAW Snap Shackle Block 35mm	35	300	550
B3004XXBS	RAW Snap Shackle Block 50mm	50	500	900
B3006XXBS	RAW Snap Shackle Block 60mm	60	750	1700
B3008XXBS	RAW Snap Shackle Block 80mm	80	1500	2700



## ROC Blocks

Rutgerson's new ROC Block range has an innovative roller bearing system which eliminates the need for extra side bearings. This allows the block not only to be extremely strong and durable, but also more price-competitive than any other equivalent block on the market.

The sides and the sheaves of the ROC Block are made of high strength aluminum anodized in black and come with a forged shackle in stainless steel.

The ROC Block is also available in a unique ball joint stand up version and has a variety of accessories which makes it very flexible and useful onboard.



Part no	Product description	Sheave Ø [mm]	Length [mm]	Shackle pin Ø [mm]	Safe working load [kg]	Line diameter Ø [mm]	Weight [gr]
ROC Block							
B400801	ROC Block 80mm, Single	80	180	10	2500	14	620
B401001	ROC Block 100mm, Single	100	198	10	3500	16	820



## ROC Block Becket

This is an extremely strong through-sheave becket solution made to fit the Rutgerson ROC Block 80/100, allowing it to be used in a large variety of setups onboard. The product consists of two halves of smoothly rounded centrepieces that are fitted together in the hub of the block, where a rope loop can be attached.



Part no	Product description	Max line Ø [mm]	Weight [gr]
ROC Block Becket			
B400812	Becket for ROC Block 80mm	14	16
B401012	Becket for ROC Block 100mm	16	27



## ROC Block Ball Joint Stand-up

This ROC Block Stand-up solution is completely unique on the market. It has a ball joint which under load adjusts itself to the right angle and stays there. It is equally strong in all directions, and allows a leaning angle down to 50 degrees. It also has the lowest height of all stand-up solutions, which helps to prevent winch overrun.

The ball joint stand-up comes in a kit with a ROC block, which is available in two sizes. There are also two different versions to choose from, one standard which is bolted on deck and one through-deck.

Depending on diameter and angle the line exits as low as 42 mm above deck on the standard one, and down to 22 mm on the through-deck version.

The stand-up should be fitted with four M8 bolts with countersunk head. For full strength, use A4-80 quality or higher.

Part no	Product description	Sheave Ø [mm]	Base plate Ø [mm]	Safe working load [kg]	Weight [gr]
ROC Block Ball Joint Stand-up					
B400848	ROC Block 80mm with Ball Joint Stand-up	80	80	2500	1100
B401048	ROC Block 100mm with Ball Joint Stand-up	100	80	3500	1300
B400849	ROC Block 80mm with Ball Joint Stand-up (through deck version)	80	80	2500	1100
B401049	ROC Block 100mm with Ball Joint Stand-up (through deck version)	100	80	3500	1300



## Spring Stand-ups

This Spring Stand-up solution allows the block to be held upright and pivot under load. It supports the block, improves the lead angle and prevents it from hitting the deck. It is available in two different sizes and optimized for the Rutgerson ROC Block 80/100 but can be used on a variety of blocks in similar size.



B300543

B300643



B400843



B401043

Part no	Product description	Safe working load [kg]	Base plate Ø [mm]	Weight [gr]
<b>Spring Stand-up</b>				
B300543	Spring Stand-up for 50mm block	1265	50	127
B300643	Spring Stand-up for 60mm block	1265	50	127
B400843	Spring Stand-up for 80mm block	3850	75	215 (835 with ROC 80)
B401043	Spring Stand-up for 100mm block	3850	75	273 (1097 with ROC 100)

Part no	Product description
<b>Spring Stand-up</b>	
B100542	Stand-up spring for 50mm block
B100642	Stand-up spring for 60mm block
B100842	Stand-up spring for 80mm block
B101042	Stand-up spring for 100mm block



## Mainsheet Tackles



B320680B



B320620B



B320520B

Part no	Product description	System purchase	Block size [mm]	Line Ø [mm]
<b>Mainsheet Tackles</b>				
B320520B	Mainsheet tackle 4:1, 50mm RAW Block, 20m spliced line	4:1	50	8
B320620B	Mainsheet tackle 4:1, 60mm RAW Block, 25m spliced line	4:1	60	10
B320680B	Mainsheet tackle 6:1, 60mm RAW Block, 35m spliced line	6:1	60	10



## Chafe Cover

Chafe covers are used on blocks in order to protect the sail from chafing. A suitable application for the chafe covers would be for example on the lazy jacks, so that when the sail is lowered it will not be damaged by the blocks. The Chafe cover are made of a soft rubber and are available in black.

Part no	Product description
Chafe Covers	
B600551	Chafe Cover, Black



## Wire Blocks

The Rutgerston wire block assortment has a vast range of application areas. They are made of Swedish high-grade stainless steel and are completely maintenance free. The wire blocks are perfect as for example back stay adjusters.



Part no	Product description	A Sheave Ø [mm]	B Length [mm]	C Pin Ø [mm]	Safe working load [kg]	Breaking load [kg]	Wire diameter [mm]	Weight [gr]
Wire Blocks								
B700301	Wire Block 35mm	35	63	6	600	1200	3	58
B700501	Wire Block 50mm	50	75	8	1000	2000	4 - 5	113
B700601	Wire Block 60mm	60	93	8	1500	3000	6 - 7	175
B700801	Wire Block 80mm	80	120	10	2750	5500	8	343
B700101	Wire Block 100mm	100	150	14	4000	8000	10	685
B700121	Wire Block 120mm	120	180	16	6000	12000	12	1135

## Deck Blocks

Rutgerston has developed two models of deck blocks, one is installed on top of the roof and the other is installed in the cockpit in order to lead the line. This block range was developed for the boat brand Sense, but it is applicable for a wide range of boats and applications. The blocks are made of anodized aluminium and a 50mm aluminium sheave with a kevlar reinforced bearing. This allows the block to reach a breaking load over 3 tons. The line dimensions are 8-14 mm.

Part no	Product description	Height [mm]	Width [mm]	Length [mm]	Sheave Ø [mm]	Line Ø [mm]	Safe working load [kg]	Hole spacing [mm]	Weight [gr]
Deck Blocks									
B309500BR	Top roof block, 50mm	72	30	70	50	8 - 14	1800	55	192
B309501BR	Bottom roof block, 50mm	69	30	84	50	8 - 14	1800	50 & 65	216

B309500BR



B309501BR

## ROC Deck Blocks

The latest member of our popular ROC Block family is an assortment of extremely strong and durable deck blocks in aluminum. They have the same innovative roller-bearing system as our reliable ROC Blocks, allowing easy line handling and incredibly low friction also under very high loads.

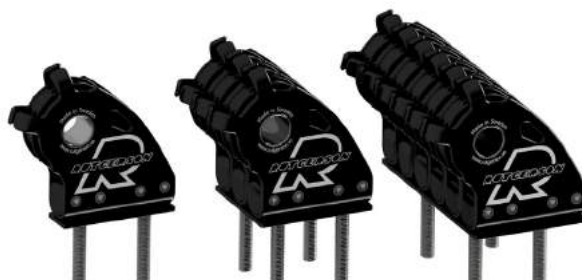
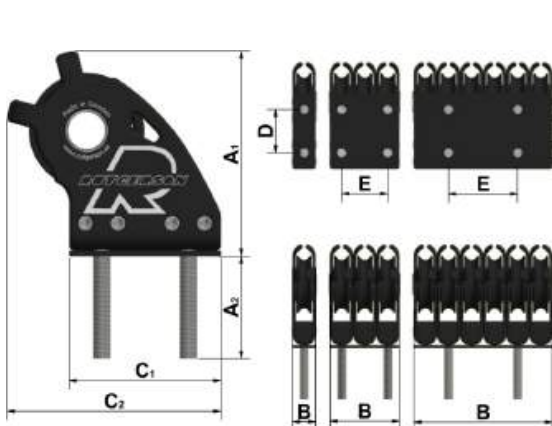
Thanks to a unique design these deck blocks permits the line to pass both under and over the top of the sheave, depending on your needs. This makes them very versatile onboard and particularly useful for leading halyards from mast bases over deck houses and coamings into the cockpit.

The ROC Deck Blocks are available with one, three or six 80mm sheaves. The versions with three and six sheaves are designed to be fitted with only four bolts each to facilitate the installation and eliminate the number of holes through deck. The single version is fitted with two bolts.

These ROC Deck Blocks are made of black hardcoat-anodised aluminum and come with 2-4 high strength acid-proof stainless steel bolts.



Part no	Product description	Dimensions [mm]						Screw	Safe working load [kg]	Breaking load [kg]	Weight [gr]
		A1 / A2 Length	B Width	C <sup>1</sup> / C <sup>2</sup> Length	Sheave Ø	Max Line Ø	D x E Hole spacing				
ROC Deck Blocks											
B409081	Single ROC Deck Block	143 / 51	32	105 / 148	80	14	60	2 x M12x80 ISO4017 A4-80	2500	4500	827
B409083	Triple ROC Deck Block	143 / 51	96	105 / 148	80	14	60 x 64	2 x M12x80 ISO4017 A4-80	2500	4500	2340
B409086	Sextuple ROC Deck Block	143 / 51	192	105 / 148	80	14	60 x 64	2 x M12x80 ISO4017 A4-80	2500	4500	4360



### Core benefits

- Superior working load (max 2500kg)
- Extremely low friction
- Available with 1, 3 & 6 sheaves
- Easy installation
- Made in Sweden

## Foot Blocks

Foot blocks are a vital part of the deck equipment as they must be able to take very high loads. In fact, the loads imposed on foot blocks are among the highest that a running rigging can generate. Due to the construction and solid materials of Rutgerson foot blocks, the load to size ratio is among the best on the market.

Spherical plain bearings that are typical for Rutgerson blocks outperform ball-bearings constantly and this is also true for our foot blocks. Due to the plain bearing construction, all our blocks are also maintenance free. Another important advantage is the fact that they are stackable and reversible in order to maximise efficiency.

The foot block assortment is divided into two ranges, anodised aluminium sides and high-tech composite sides.



B319040B  
B319060B



B300041B  
B300061B



B300081B



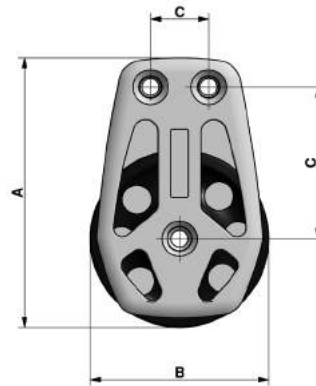
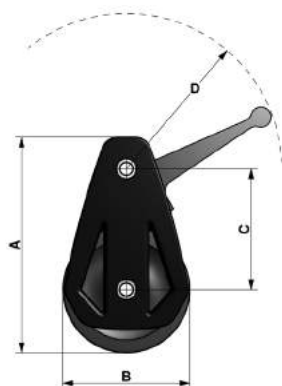
B309081  
B309101



B309082

Part no	Product description	Dimensions [mm]					Safe working load [kg]	Breaking load [kg]	Sides & sheaves	Bolts	Weight [gr]
		A Length	B Sheave Ø	C Hole spacing	D Jammer radius	Line Ø					
Foot Blocks with jammer											
B319040B	Foot Block 40mm with jammer	82	40	49	77	4 - 12	600	1200	Composite	2 x M6	126
B319060B	Foot Block 60mm with jammer	107	60	60	77	8 - 14	750	1500	Composite	2 x M6	192
Foot Blocks											
B300041B	Foot Block 40mm single	82	40	49		4 - 12	600	1200	Composite	2 x M6	96
B300061B	Foot Block 60mm single	107	60	60		8 - 14	750	1500	Composite	2 x M6	162
B300081B	RAW Foot Block 80mm single	130	80	74 x 19		10 - 18	1500	3000	Composite	2 x M6 1 x M8	267
B309081	Foot Block 80mm single	130	80	74 x 28		10 - 18	2980	4200	Aluminum	3 x M8	550
B309082	Foot Block 80mm double	130	80	74 x 28		10 - 18	2980*	4200	Aluminum	3 x M8	871
B309101	Foot Block 100mm single	169	100	102 x 34		12 - 20	3900	8000	Aluminum	3 x M10	807

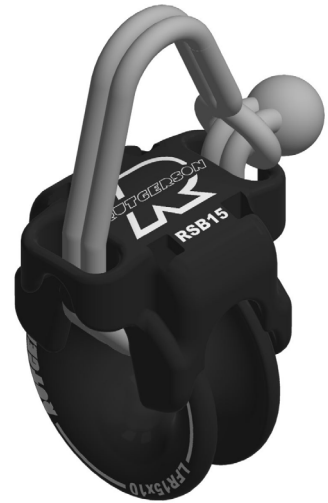
40 and 60 mm footblocks are stackable - \*The upper block when stacked or double has half the SWL / BL  
Maximum holding load of the jammer 300 kg



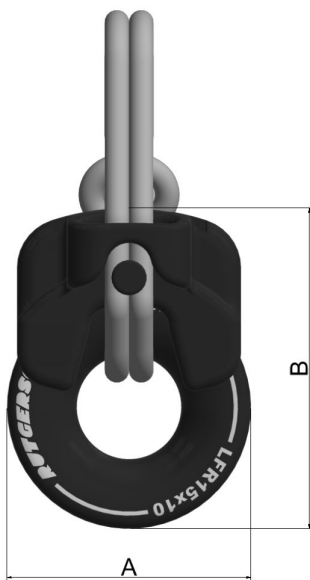
## SNATCH BLOCK

We are proud to introduce our first openable block ever: Rutgerson Snatch Block (RSB). This snatch block is very flexible and can be used on almost any block application on a boat or sail such as barber, hauler, genoa line. It's easy to remove and install on a line already under load. The block is designed with a Rutgerson Low Friction Ring and a strong Dyneema loop which is perfect for low load high speed or high load low speed applications.

The RSB is our lightest block yet with an incredible strength/weight ratio as well as an extremely high working load compared to dimension. It is also designed so that there are no loose parts. The block can be opened without risking to lose the low friction ring. The low friction ring is anodised with a unique hard-coat and Teflon-impregnated anodization with very low friction properties. The Dyneema loop has a diamond knot, which we have developed ourselves, that generates almost twice the strength to the loop shackle compared to a standard diamond knot shackle with the same line dimension.



Part No	Product description	Low Friction Ring	Dimensions [mm]			SWL [kg]	Weight [g]
			A Sheave Ø	B Length	Max Line Ø		
Rutgerson Snatch Block							
RSB15	Rutgerson Snatch block size 15	LFR15X10	35	46	6	1600	30
RSB21	Rutgerson Snatch block size 21	LFR21X14	49	65	10	3200	78
RSB25	Rutgerson Snatch block size 25	LFR25X17	60	78	14	5200	135



### Core benefits

- Very high load
- Light weight
- No lose parts
- Stronger version of diamond knot
- Made in Sweden

Please find product video: <https://www.rutgerson.se>



## LOW FRICTION RINGS

Low friction rings provide a good alternative to blocks in most applications where the line movements are minimal and the loads are high. For example back-stays, reefing points, jibs' sheet leads and lazy jacks. Their versatility seems to have no limits on the boat.

The rings are extremely resistant and strong. Both cost and weight is low compared to blocks. Plus, with no moving parts maintenance is zero.

The assortment consists of five sizes, all made of high strength aluminum with an extremely durable and low friction hard-coat and Teflon impregnated anodization in black.



Part no	Product description	Dimensions [mm]				Approx SWL [kg]	Weight [gr]	Packed per
		Size	Max Line Ø	Hole Ø	Outer Ø			
Low Friction Rings								
LFR7x5	Low Friction Ring	7 x 5	5	7	17,5	400	1,8	10
LFR10x7	Low Friction Ring	10 x 7	7	10	24,5	800	5	10
LFR15x10	Low Friction Ring	15 x 10	10	15	35	1600	16	10
LFR21x14	Low Friction Ring	21 x 14	14	21	49	3200	42	10
LFR25x17	Low Friction Ring	25 x 17	17	25	59,5	5200	72	10



## STAINLESS STEEL FITTINGS

### Padeyes

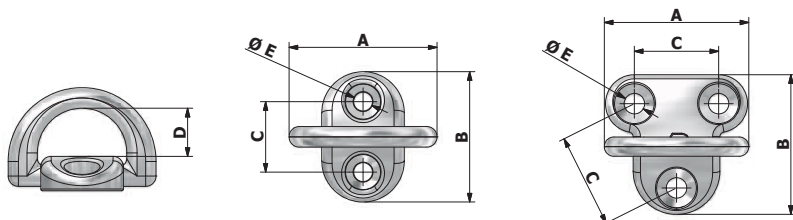
The Rutgerson padeyes have an incredibly elegant and stream-lined design – a jewel on your deck! They are made of high quality stainless steel. The padeyes are excellent for mounting blocks on deck or as attachment points for safety lines, staysails, reefing blocks, jibe preventors and many other application areas.

Flexibility is the main characteristic of Rutgerson padeyes as they can be mounted practically anywhere and can take very heavy loads. They adjust themselves to the angle of the load and fold down when they are without load in order to minimize the risk of hurting the crew and equipment.



Rutgerson padeyes correspond to the declaration of "Man overboard prevention" SS-EN ISO 15085:2003.

Part no	Product description	Dimensions [mm]					Safe working load [kg]	Breaking load [kg]	Weight [gr]
		A	B	C	D	Ø E			
Padeyes									
E030010S	Padeye 14	43	40	23	14	5,5	850	1500	66
E030020S	Padeye 17	45	39	27	16	6,5	1100	2200	75
E030030S	Padeye 20	60	58	35	21	8,5	1750	3500	184



#### Core benefits

- Wide range of application areas
- Very high working load
- Stream-lined for aesthetic and practical reasons

### Snap Shackle

A snap shackle is a fast action fastener which can be implemented single handed. It uses a spring activated locking mechanism to close a hinged shackle, and can be unfastened under load. This shackle is like our other shackles and hooks made of a high-quality stainless steel, namely AISI316.



E050070

### Pelican Hook

The pelican hook is suitable for several areas of usage, such as the safety lines. The fitting is made of high-quality stainless steel, namely AISI316. Both the snap shackles and the pelican hook conform to the following standard:

Small craft – Man –overboard prevention and recovery ISO 15085:2003



E050075

Part no	Product description	Safe working load [kg]	Breaking load [kg]	Weight [gr]	Dimensions [mm]
Stainless Steel Fittings					
E050070	Snap shackle 70mm	800	1400	70	70 x 45
E050120	Snap shackle 120mm	1250	4000	227	120 x 70
E050075	Pelican hook	600	1200	67	75 x 45

## ROPE CLUTCHES

### Rope Clutch RC75

Rutgerson rope clutches can take much higher loads than equivalent sizes of other manufacturers on the market due to a unique combination of clever construction and high-quality materials. The housing is made of a black high-tech composite of high strength, whereas the other parts are made of either anodized aluminium or stainless steel. You will find that the handling of the lines much easier with Rutgerson rope clutches. This is because it is the only rope clutch on the market fitted with an integrated low-friction sheave, which ensures that the line runs smoothly – both when winching and when hauling by hand. Naturally, the clutch allows continued trimming of the line even when it is in a locked position.

#### Core benefits

- Superior working load
- Easy and cleaver installation
- Elegant design
- Minimum friction
- Made in Sweden



S600701



S600702

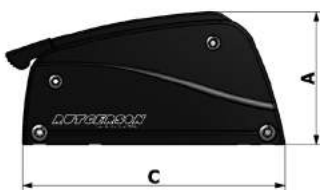


S600703

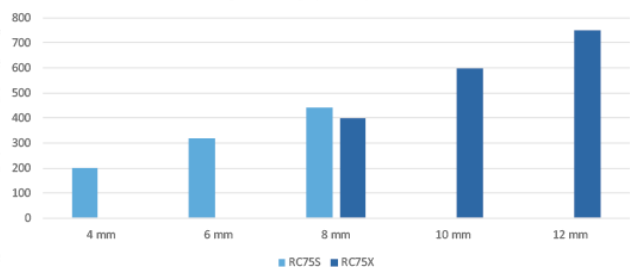


S600705

Part no	Product description	Dimensions [mm]					Max load [kg]	Weight [gr]
		A Height	B Width	C Length	D x E Hole spacing	Line Ø		
<b>Rope Clutch RC75X</b>								
S600701	Single Rope Clutch RC75X	70	39	139	79 (M6 bolts)	8 - 12	750	352
S600702	Double Rope Clutch RC75X	70	66	139	79 x 27,5 (M6 bolts)	8 - 12	750	618
S600703	Triple Rope Clutch RC75X	70	94	139	79 x 27,5 (M6 bolts)	8 - 12	750	894
S600705	Rope Clutch RC75X 5 units	70	154	139	79 x 27,5 (M6 bolts)	8 - 12	750	1400
<b>Rope Clutch RC75S</b>								
S600711	Single Rope Clutch RC75S	70	39	139	79 (M6 bolts)	4 - 8	750	352
S600712	Double Rope Clutch RC75S	70	66	139	79 x 27,5 (M6 bolts)	4 - 8	750	618
S600713	Triple Rope Clutch RC75X	70	94	139	79 x 27,5 (M6 bolts)	4 - 8	750	894
S600715	Rope Clutch RC75X 5 units	70	154	139	79 x 27,5 (M6 bolts)	4 - 8	750	1400



Max holding load (kg) per rope diameter (mm)

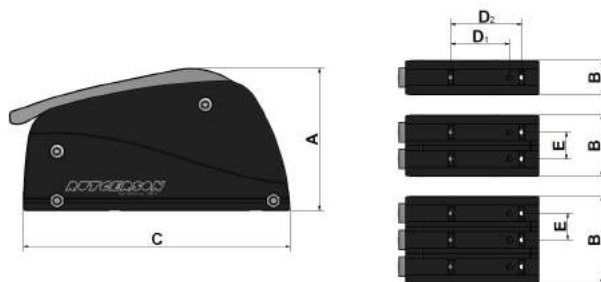


## Rope Clutch RC120

The RC120 has been developed especially for modern types rope such as Lycra and Dyneema. The handle is equipped with a revolutionary needle-bearing, which gives the RC120 a performance that was unthinkable before. The new handle has a built-in friction function that ensures that the handle stays in one position, open or closed. Releasing the desired load requires little effort, even during very heavy loads. It is also possible to quickly and without effort close the rope clutch.

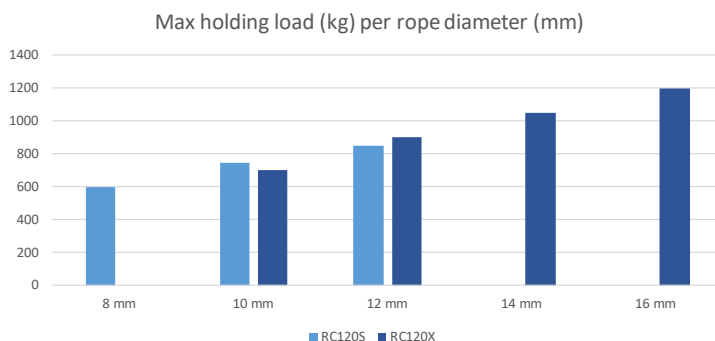


Part no	Product description	Dimensions [mm]					Max load [kg]	Weight [gr]
		A Height	B Width	C Length	D x E Hole spacing	Line Ø		
<b>Rope Clutch RC120X</b>								
S601201	Single Rope Clutch RC120X	81	41	160	70 and 85 (M6 bolts)	10 - 16	1200	624
S601202	Double Rope Clutch RC120X	81	73	160	70 x 32 and 85 x 32 (M6 bolts)	10 - 16	1200	1119
S601203	Triple Rope Clutch RC120X	81	105	160	70 x 32 and 85 x 32 (M6 bolts)	10 - 16	1200	1621
<b>Rope Clutch RC120S</b>								
S601211	Single Rope Clutch RC120S	81	41	160	70 and 85 (M6 bolts)	8 - 12	850	624
S601212	Double Rope Clutch RC120S	81	73	160	70 x 32 and 85 x 32 (M6 bolts)	8 - 12	850	1119
S601213	Triple Rope Clutch RC120S	81	105	160	70 x 32 and 85 x 32 (M6 bolts)	8 - 12	850	1621



### How to choose Rope Clutches

Which rope clutch you need depends on the needed maximal load capacity, the line diameter and the quality of the rope. The test for the diagram has been made with standard polyester ropes.





## Rope Clutch RC2000

Rutgerson's largest rope clutch has the most innovative design yet and is completely unique on the market. It has been developed to take extreme loads up to 2 tons with minimal effect on the line. Despite the high loads the handle is incredibly smooth to release, you can lift it with one finger!

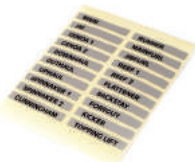
The housing is made of black anodised aluminium and the handle is made of polished aluminium for a sleek, modern look.



**WARNING!** The larger rope clutches are developed to release the load easily, so make sure when releasing high loads not to keep your hands close to the rope entrance. Always put the line back on the winch before releasing the load for a safe line handling.

Part no	Product description	Dimensions [mm]					Max load [kg]	Weight [gr]
		Height	Width	Length	Hole spacing	Line Ø		
Rope Clutch RC2000								
S602001	Single Rope Clutch RC2000	101	43	200	140	8 - 14	2000	1200

## Rope Clutch Accessories



S600001



S600010



S600015



S600020



S600025



S600026



S601027



T609006

Part no	Product description
Rope Clutch Accessories	
S600001	Rope clutch labels
S600010	Spring package for RC75X / RC750HPX / RC750
S600015	Replacement handle for RC75X / RC750HPX / RC750
S600020	Sheave for RC75X / RC750HPX / RC750
S600025	Cam for RC75X / RC750HPX / RC750
S600026	Cam for RC75S
S601027	Spring package for RC120X / RC1000HPX
T609006	Sealant washer

## DECK FILLERS

The range includes deck fillers for diesel, petrol, waste, water and deck access. As usual, Rutgerson's products bring something new and innovative to the market and in this case a unique link system. The link is made of the same material as cable ties, which is extremely strong compared to other composite materials. It is constructed so that it is incredibly easy to replace without any work from the inside, but just from the deck. The deck fillers are colour-coded in order to facilitate the distinction between different deck fillers. The design with high grade stainless steel and high tech composite is much more corrosion resistant compared to other solutions on the market such as casted steel.

The deck fillers for waste correspond to the standard ISO 8099.

### Core benefits

- Light weight
- No corrosion
- No need for grounding
- Color-coded
- Reliable link-system
- Made in Sweden



Diesel



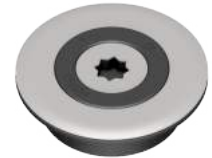
Petrol



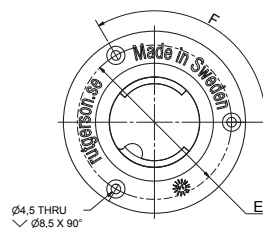
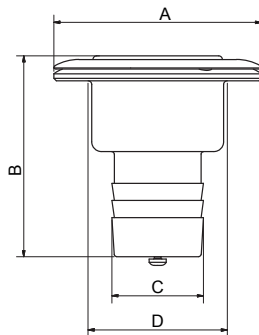
Waste



Water



Deck Access

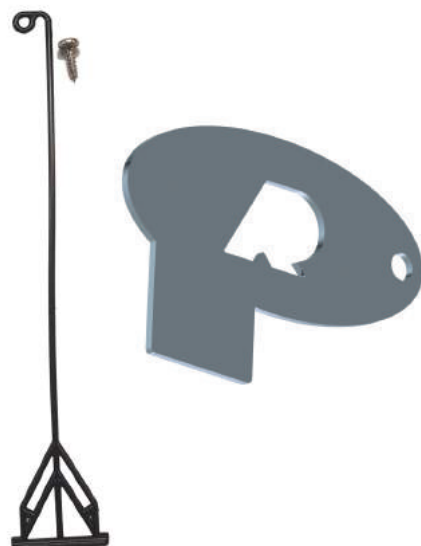


Part no	Product description	Dimensions [mm]						Screw holes	Weight [gr]
		A Outer Ø	B Height	C For hose	D Cutout	E Screw hole position	F Angle		
<b>Deck Fillers Diesel</b>									
CL038DIE-TL	Deck filler for Diesel, 38mm	Ø85	82	Ø38	Ø57	Ø72	120° (3x)	Ø4,5 (3x)	185
CL050DIE-TL	Deck filler for Diesel, 50mm	Ø85	85	Ø50	Ø57	Ø72	120° (3x)	Ø4,5 (3x)	186
CL054DIE-TL	Deck filler for Diesel, 54mm	Ø85	90	Ø54	Ø57	Ø72	120° (3x)	Ø4,5 (3x)	193
<b>Deck Fillers Petrol</b>									
CL038PET-TL	Deck filler for Petrol, 38mm	Ø85	82	Ø38	Ø57	Ø72	120° (3x)	Ø4,5 (3x)	185
CL050PET-TL	Deck filler for Petrol, 50mm	Ø85	85	Ø50	Ø57	Ø72	120° (3x)	Ø4,5 (3x)	186
CL054PET-TL	Deck filler for Petrol, 54mm	Ø85	90	Ø54	Ø57	Ø72	120° (3x)	Ø4,5 (3x)	193
<b>Deck Fillers Waste*</b>									
CL038WAS-TL	Deck filler for Waste, 38mm*	Ø85	130	Ø38	Ø57	Ø72	120° (3x)	Ø4,5 (3x)	215
CL050WAS-TL	Deck filler for Waste, 50mm*	Ø85	130	Ø50	Ø57	Ø72	120° (3x)	Ø4,5 (3x)	179
<b>Deck Filler Water</b>									
CL038WAT-TL	Deck filler for Water, 38mm	Ø85	82	Ø38	Ø57	Ø72	120° (3x)	Ø4,5 (3x)	185
CL050WAT-TL	Deck filler for Water, 50mm	Ø85	82	Ø50	Ø57	Ø72	120° (3x)	Ø4,5 (3x)	186
<b>Deck Filler Deck Access</b>									
CL098ACC	Deck filler for Deck Access	Ø132	39		Ø101	Ø114,5	60° (6x)	Ø4,5 (6x)	360

\*Complies with the global ISO 8099-standard for waste systems.

## Deck Filler Accessories

Part no	Product description
<b>Deck Filler spare parts</b>	
CLKEY	Deck Filler Key
CLCDIE38	Top Part for Diesel 38mm
CLDIE	Top Part for Diesel, 54mm
CLCPET38	Top Part for Diesel, 38mm
CLCPET	Top Part for Petrol, 54mm
CLCWAS	Top Part for Waste
CLCWAT	Top Part for Water
CLCACC	Top Part for Deck Access
CLLINK	Standard Link for Deck Filler
CLLINK38	Link for Deck Filler Fuel, 38mm
CLLINK50	Link for Deck Filler Fuel, 50mm
CLLINK54	Link for Deck Filler Fuel, 54mm



## DECK ORGANISERS

### Aluminium Organisers

The Rutgerson Transatlatic Organiser with aluminum plates is available with two, three, four, five or six composite sheaves. The extensive range results in high flexibility, since sailors can choose sizes according individual preference and deck layout. They can be stacked on top of each other to maximise efficiency of space and each sheave is through-deck bolted, which results in a high breaking loads. Special bolts are available separately.

#### Core benefits

- High working load
- Wide range of sizes
- Elegant design
- Made in Sweden



B600022



B600023



B600024



B600025



B600026

Part no	Product description	Dimensions [mm]			Safe working load [kg]	Breaking load [kg]	Line diameter [mm]	Weight [gr]
		A Length	B Sheave Ø	C Hole spacing				
Deck Organiser - aluminum sides & composite sheaves								
B600022	Deck organiser 2 sheaves	115	40	56	800	1800	8 - 14	160
B600023	Deck organiser 3 sheaves	170	40	56	800	1800	8 - 14	240
B600024	Deck organiser 4 sheaves	230	40	56	800	1800	8 - 14	320
B600025	Deck organiser 5 sheaves	285	40	56	800	1800	8 - 14	405
B600026	Deck organiser 6 sheaves	340	40	56	800	1800	8 - 14	490

M8 mounting bolts in all the fixing holes

### Special Bolt Set

Nut and bolt suitable for Rutgerson deck organisers and footblocks.



Part no	Product description
Special Bolt Set	
B290060-1	Special Bolt Set M6 x 80mm
B290060-2	Special Bolt Set M6 x 120mm
B290080-0	Special Bolt Set M8 x 60mm
B290080-1	Special Bolt Set M8 x 80mm
B290080-2	Special Bolt Set M8 x 120mm
B290081-1	Special Bolt Set M8 x 100mm
B2900100-1	Special Bolt Set M10 x 80mm
B290100-2	Special Bolt Set M10 x 120mm



## ROC Organisers

Rutgerson's ROC Organisers in aluminum are especially developed for smooth and safe line handling on big boats with high loads. Each sheave is bolted through deck and has a durable Kevlar bearing which together with the strong design gives a very low friction and superior breaking load. The ROC Organisers can be stacked on top of each other to maximize efficiency of the space on deck. This makes them exceptionally useful for leading multiple halyards or other lines aft to the safety of the cockpit.



Sides and sheaves are made of black hardcoat-anodized aluminum and shall be fitted with M12 countersunk head screws (ISO 10642 or DIN 7991) with a maximum head diameter of 24mm. Screws are not included, and shall be chosen depending on deck thickness. Optional mounting plate is available as spare part.

Part no	Product description	Dimensions [mm]				Safe working load [kg]	Breaking load [kg]	Line diameter [mm]	Weight [gr]
		A Length	B Sheave Ø	C Hole spacing	Height				
<b>ROC Organiser</b>									
B400022	ROC Organiser 2 sheaves	154	60	70	35	2500	4500	16	456
B400023	ROC Organiser 3 sheaves	224	60	70	35	2500	4500	16	678
B400024	ROC Organiser 4 sheaves	294	60	70	35	2500	4500	16	900
B400025	ROC Organiser 5 sheaves	364	60	70	35	2500	4500	16	1122
B400026	ROC Organiser 6 sheaves	434	60	70	35	2500	4500	16	1344
<b>ROC Organiser Mounting Plate</b>									
B400022MP	Mounting plate for organiser B400022	152		70	4				78
B400023MP	Mounting plate for organiser B400023	222		70	4				117
B400024MP	Mounting plate for organiser B400024	292		70	4				155
B400025MP	Mounting plate for organiser B400025	362		70	4				194
B400026MP	Mounting plate for organiser B400026	432		70	4				232

### Core benefits

- Superior working load (max 2500 kg)
- Low friction
- Available with 2-6 sheaves
- Stackable
- Made in Sweden



## TRACK SYSTEMS

### Mainsheet System

#### Control the power!

The mainsheet is one of the most exposed parts of a yacht's equipment due to the extreme level of stress during sailing. The Rutgerson mainsheet system increases the durability and performance of that part due to its clever construction and Roll-link function. The system is built up in modules, which makes it easy to adapt to different types of boat and specifications. The tracks and travellers are made of high-quality anodised aluminium.

Rutgerson is very proud to announce that the product was proclaimed "Best in Test" among other traveller systems available on the market according to a test performed by the German magazine Segeln in association with Chalmers University (Technical university in Sweden). The test was designed to give an objective measure of the sliding resistance under realistic conditions, with a vertical pre-load corresponding to rough weather conditions.

*"It was found that the Rutgerson slider is superior in horizontal sliding under heavy conditions. Once again it was shown that Roll-links are clearly superior to ball bearings" (German magazine Segeln)*

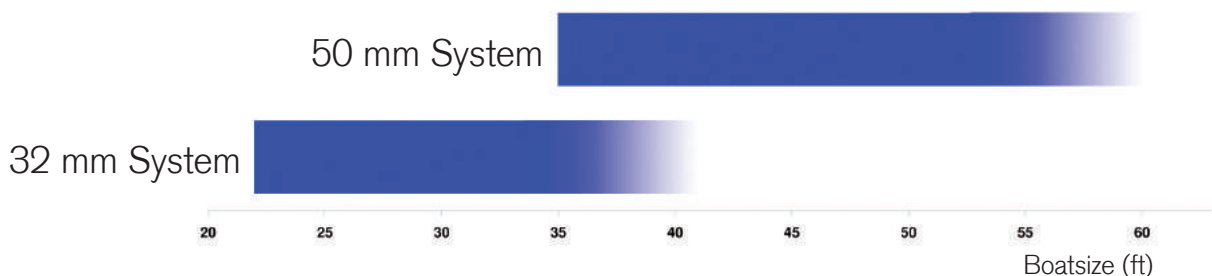
The unique construction of the track system renders the product completely safe. The travellers cannot be detached from the track by force or accident, so even if the product breaks under extreme conditions the traveller will stay attached to the track preventing injuries to the crew and the equipment.

#### Advantages with Roll-links:

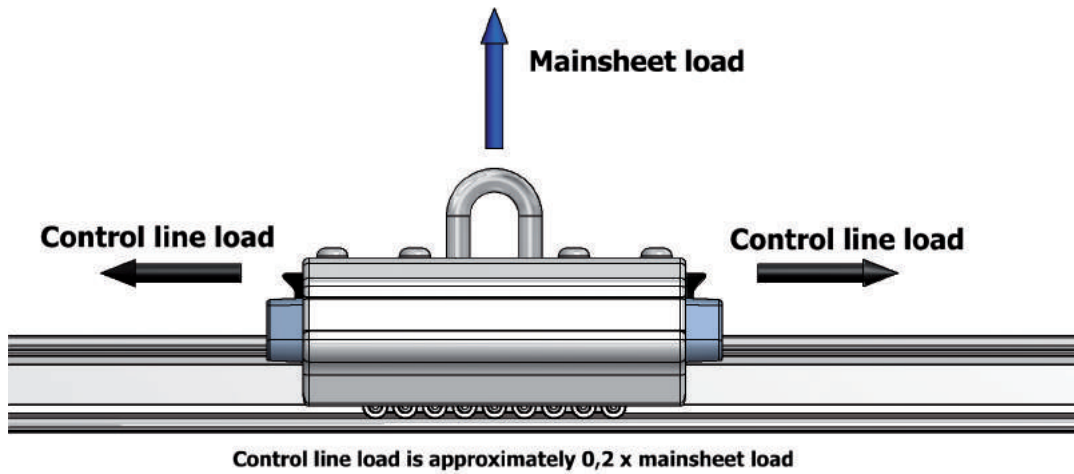
- Maintenance free travellers that will always run smoothly due to the stainless steel link that keeps the rolls apart. This construction prevents any obstruction or clogging with salt or dirt. The roll-link "cleans itself" due to its unique construction.
- Easy to assemble because the rolls are held together with a stainless steel link. The fact that all rolls are held together facilitates both installation and adjustment.
- The force is spread over a larger area, which results in a reduction in strain on the material. The balls in ball bearing systems will deform into an egg-shape under pressure and stop running smoothly. Roll-links will always retain their original shape.
- The higher stress on the product during rough weather conditions, the better performance.

#### How to choose Mainsheet System

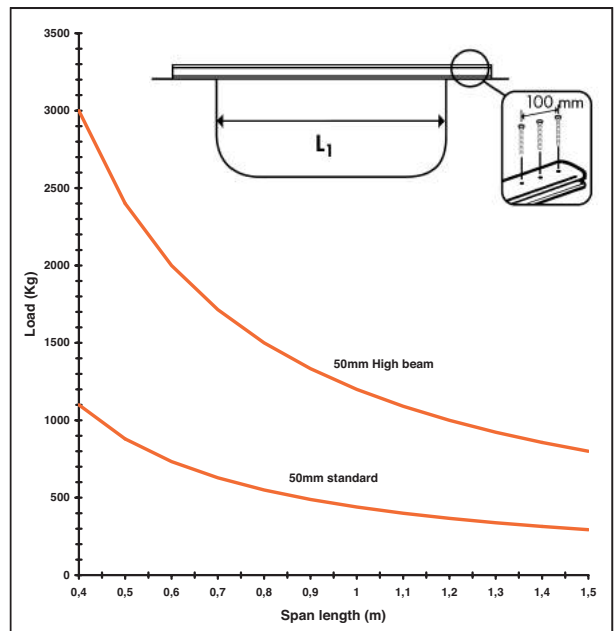
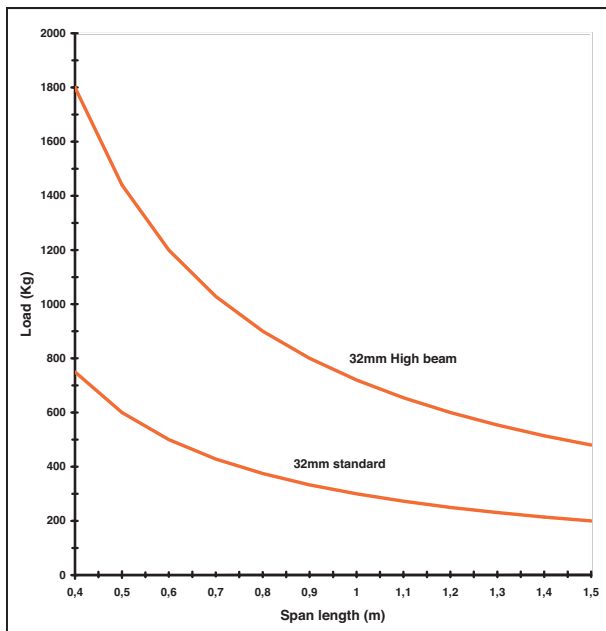
Below you see which system we generally recommend, depending on the size of the boat.



Good to know when you choose control line for your Mainsheet System



How to choose track size and profile



The maximum load on the mainsheet track depends on the distance between the sides in the cockpit when the mainsheet track is unsupported. That distance is called the span length. To obtain the maximum load, measure the distance and insert into the graph. This graph is a general guide to help sailors choose the correct track for their boat. This information is only true when the track has been fitted according to Rutger's instructions.

## 32mm Traveller



T610112



T610122



T610001



T610111



T610021



T610113



T610101



T610121



T610212



T610222



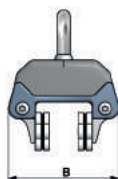
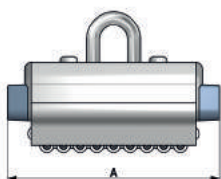
T620301



T620005



T620006



All mainsheet travellers, end stops and tracks are available in black, anodized aluminium.  
Add B after the Part No.

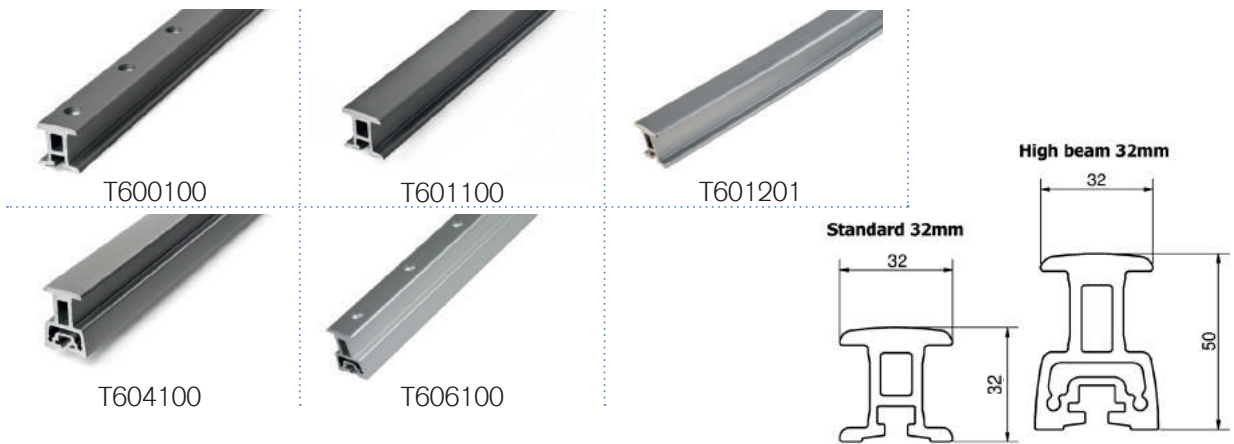
Part no	Product description	Dimensions [mm]		Safe working load [kg]	Breaking load [kg]	Weight [gr]
		A Length	B Width			
<b>32 mm Travellers</b>						
T610112	Extra short car with shackle	78	67	500	3000	315
T610122	Extra short car with stand-up	78	67	500	3000	325
T610001	Short car with shackle	125	67	1000	4000	475
T610111	Short car with shackle and stopper	125	67	1000	4000	325
T610021	Short car with stand-up	125	67	1000	4000	485
T610113	Short car with stand-up and stopper	125	67	1000	4000	535
T610101	Standard car with shackle and sheave	155	67	1000	4000	585
T610121	Standard car with stand-up and sheave	155	67	1000	4000	595
T610212	Long car with double shackle and sheave	235	67	2000	4000	1200
T610222	Long car with double stand-up and sheave	235	67	2000	4000	1300
T620301	Control line end stops with sheaves	88	67			500
T620005	Adjustable plunger stoppers	58	41			365
T620006	Fixed plunger stoppers	58	41			300

All end stops are packed in pairs.

All mainsheet travellers, end stops and tracks are available in black, anodized aluminium. Add "B" to the part no.



## 32mm Tracks



Part no	Product description	Width [mm]	Height [mm]	Hole spacing [mm]	Fasteners	Weight [gr/m]
<b>32 mm Tracks</b>						
T600100	32mm track with stop hole	32	32	75	M6	1000
T601100	32mm track for sliding bolt	32	32		M6	1000
T601201	32mm track for sliding bolt, 2,0m bent 3,4m (Standard)	32	32		M6	2200gr/pc
<b>32 mm High Beam Tracks</b>						
T604100	32mm high beam track for sliding bolt*	32	50		M6	1900
T606100	32mm high beam track with stop hole*	32	50	75	M6	1790

Tracks are available in a maximum length of 6000mm and bolts required are M6 (32mm)

\*Special washers are required for installation, part no T609016

Add "B" after partnumber for black anodized aluminium.

## 32mm Complete Mainsheet System



This 32mm mainsheets system comes as an assembled set, ready to be fitted on the deck. The control lines have to be acquired separately.

Part no	Product description	Length [m]	Width [m]	Safe working load [kg]	Breaking load [kg]	Weight [gr]
<b>Complete Mainsheet system</b>						
T690110	Complete mainsheet system, 32 mm track	1500	67	1000	4000	3100

## 50mm Traveller



T610900



T610920



T610901



T610921



T610902



T610932



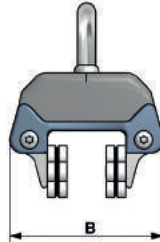
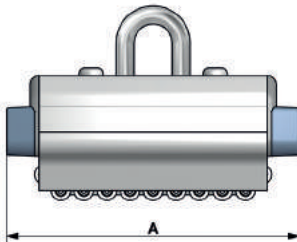
T620905



T620906



T630501



All mainsheet travellers, end-stops and tracks are available in black, anodized aluminium. Add B after the Part No.

Part no	Product description	Dimensions [mm]		Safe working load [kg]	Breaking load [kg]	Weight [gr]
		A Length	B Width			
50 mm Travellers						
T610900	Short car with shackle	130	73	2000	5000	645
T610920	Short car with stand-up	130	73	2000	5000	690
T610901	Standard car with shackle and sheave	164	73	2000	5000	825
T610921	Standard car with stand-up and sheave	164	73	2000	5000	850
T610902	Long car with double shackle and sheave	235	73	3000	6800	1270
T610932	Long car with double stand-up and sheave	235	73	3000	6800	1360
T630501	Control line end stops with sheaves	88	73			510
T620905	Adjustable plunger stoppers	58	61			420
T620906	Fixed plunger stoppers	58	61			320

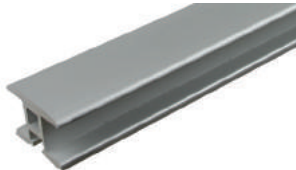
All end stops are packed in pairs.

All mainsheet travellers, end stops and tracks are available in black, anodized aluminium. Add "B" to the part no.

## 50mm Tracks



T603100



T602100



T602201



T605100



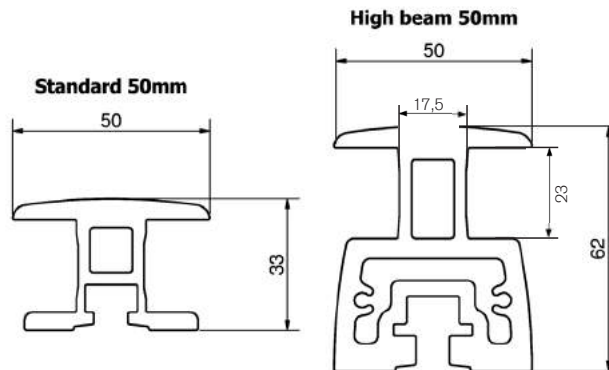
T607100

Part no	Product description	Width [mm]	Height [mm]	Hole spacing [mm]	Fasteners	Weight [gr/m]
<b>50 mm Tracks</b>						
T603100	50mm track with stop hole	50	33	75	M8 with Ø 14mm head	1000
T602100	50mm track for sliding bolt	50	33		M8 with Ø 14mm head	1500
T602201	50mm track for sliding bolt, 2,0m bent 4,0m (Standard)	50	33		M8 with Ø 14mm head	3000gr/pc
<b>50 mm High Beam Tracks</b>						
T605100	50mm high beam track for sliding bolt*	50	62		M8 with Ø 14mm head	3600
T607100	50mm high beam track with stop hole*	50	62	75	M8 with Ø 14mm head	3240

Tracks are available in a maximum length of 6000mm and bolts required are M8 (50mm)

\*Special washers are required for installation, part no T609018

Add "B" to part no. for black anodised aluminium



## Accessories for Mainsheet Systems



T620351



T620352



T620353



T620001  
T620901



T620002  
T620902



T600001  
T600002



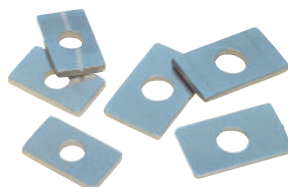
T310502  
T310504  
T310505



T310503  
T310506



T609006  
T609008



T609016  
T609018

Square washer must be used with high beam track.



T605011

Part no	Product description	Weight [gr/m]
Accessories for 32mm & 50mm Mainsheet System		
T620351	Single sheave control line	120
T620352	Sheave control line and cleat	360
T620353	Double sheave control line	230
T620001	Composite end caps for 32mm track	60
T620901	Composite end caps for 50mm track	100
T620002	Composite end caps for 32mm high beam track	6
T620902	Composite end caps for 50mm high beam track	20
T600001	Spare stand-up for 32mm traveller	70
T600002	Spare stand-up for 50mm traveller	130
T609006	Sealant washers for 32mm track	1
T609008	Sealant washer for 50mm track	1
T310502	Roll-links (20 rolls) that fit 32mm travellers T610111, T610001, T610101, T610113, T610021, T610121, T610212, T610222	18
T310504	Roll-links (24 rolls) that fit 32mm traveller T610192	22
T310505	Roll-links (12 rolls) that fit 32mm traveller: T610112, T610122	14
T310503	Roll-links (20 rolls) that fit 50mm travellers T610900, T610902, T610920, T610932	37
T310506	Roll-links (24 rolls) that fit 50mm travellers T610901, T610921, T610992	44
T609016	Square washers for 32mm high beam track	7
T609018	Square washers for 50mm high beam track	14
T605011	End fitting for 32mm high beam track	890



## Genoa Systems

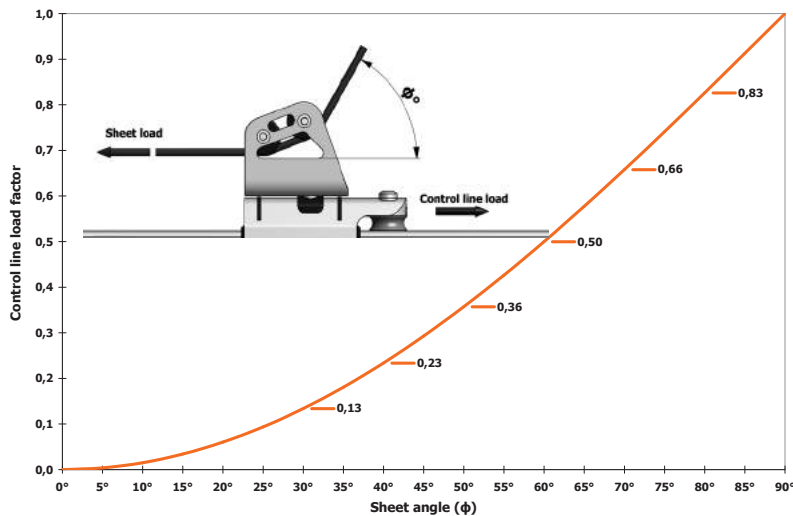
It is possible to adapt our genoa system so that it perfectly matches your boat and your needs. The system is built up in modules with varying application. The genoa travellers come in three sizes for boats up to 60ft. There are two models available, one with a plunger stop for tracks with stop holes and the other with a 2:1 control line sheave for tracks with a concealed fastening mechanism.

The centre-pin pivoting main body permits alignment with the sheets, not only sideways but also across the traveller car. Another crucial advantage with the Rutgerson Genoa traveller is that the "head" stands up by itself, minimising the risk of chafing/tearing of the sheet. To use the traveller, either lock the car in place with the plunger stop or fix it in the open position for a "semi-floating" function.

Rutgerson genoa travellers can be smoothly adjusted under load due to a composite material fitted between the traveller and the track. The two sheaves simulate one larger sheave, giving a low sheeting point and minimising chafing on all components. As with all our track systems, no maintenance is required.



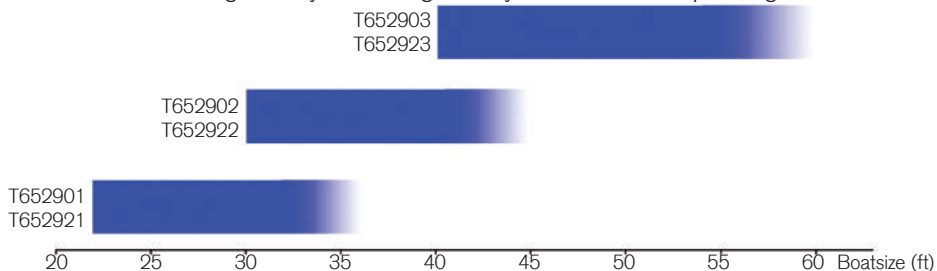
### How to calculate the load on your control line



The maximum load on the control line depends on the deflection of the sheet ( $\Phi$ ). In the graph you will find the load factor for the control line that corresponds to the different sheet angles. To obtain the control line load, multiply the sheet load with the control line load factor. If the sheet load is 100kg and the sheeting angle is 40 degrees, the control line load is  $100 \times 0,23 = 23\text{kg}$ .

### How to choose Genoa System

Below you see which car for the genoa system we generally recommend, depending on the size of the boat.



## Genoa System Travellers



T652901



T652902



T652903



T652921



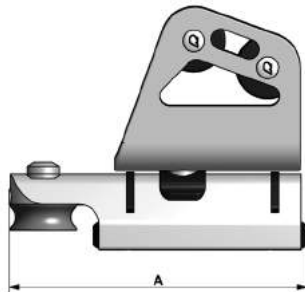
T652922



T652923



T652912



All genoa travellers, end stops and tracks are available in black anodized aluminium.

Add **B** after the Part No.

Part no	Product description	Dimensions [mm]		Safe working load [kg]	Breaking load [kg]	Weight [gr]
		A Length	B Width			
Genoa System Cars						
T652901	Genoa traveller small with plunger stop	138	46	1000	2000	610
T652902	Genoa traveller medium with plunger stop	152	46	1500	3000	758
T652903	Genoa traveller large with plunger stop	176	46	2000	4000	1030
T652921	Genoa traveller small with 2:1 control	150	46	1500	3000	610
T652922	Genoa traveller medium with 2:1 control	164	46	1500	3000	758
T652923	Genoa traveller large with 2:1 control	188	46	2000	4000	1030
T652912	Genoa lead block	100	46	1500	3000	523

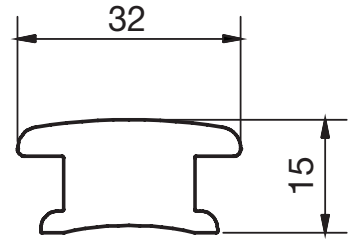
## 32mm Genoa Tracks



T652100



T653100



Part no	Product description	Width [mm]	Height [mm]	Hole spacing [mm]	Fasteners	Weight [gr/m]
32 mm Genoa Tracks						
T652100	32mm track with stop hole	32	15	75	M6	850
T653100	32mm track for sliding bolt*	32	15		M8	555

\* Special washers required for installation, part no. T609008.  
Add "B" to part no. for black anodised aluminium

## End Stops



T620301



T620005



T620007

Part no	Product description	Width [mm]	Height [mm]	Weight [gr/m]
End Stops				
T652001	End stops	39	38	38
T620301	Control line end stops with sheave	88	67	248
T620005	Adjustable plunger stoppers	58	67	185
T620007	Friction stoppers	58	67	350



T652001

All end stops comes in pairs.

## Accessories

Part no	Product description
Accessories	
T352915	Control line eye for traveller T652901, T652902 and T652903 for floating control
T609008	8mm Sealant washer



T352915



T609008

## Self-tacking JIB System

The Rutgerson self-tacking jib system does all the work for you. It is built around our roll-link traveller system, which can be adjusted to fit all kinds of boats. The travellers can take oblique loads up to 45 degrees from vertical. Side friction is minimal due to the successful Roll-link concept. Our self-tacking jib system has been developed and tested to withstand the toughest conditions at sea.

The track can be bent horizontally, vertically or both in a compound bend. For tracks with a radius that is greater than 3700mm or smaller than 3400mm, a customised track can be ordered.

Like all our track systems, the self-tacking jib is completely maintenance free. Just rinse the track and traveller two or three times per season with fresh water.

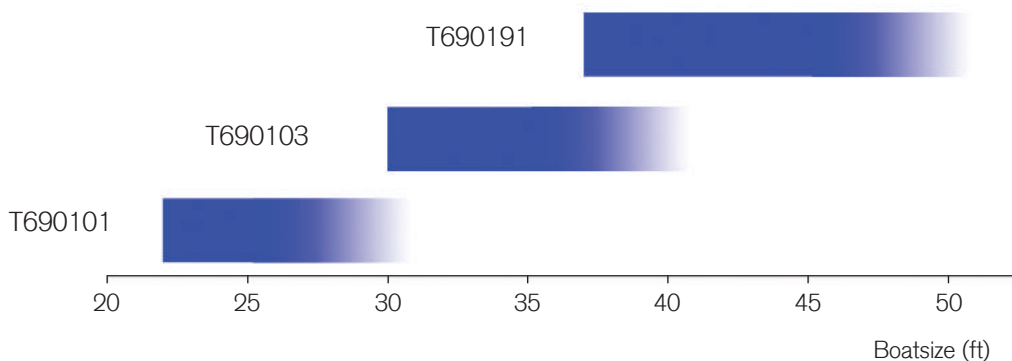
In order to establish the correct bending radius for you boat, please do the following:

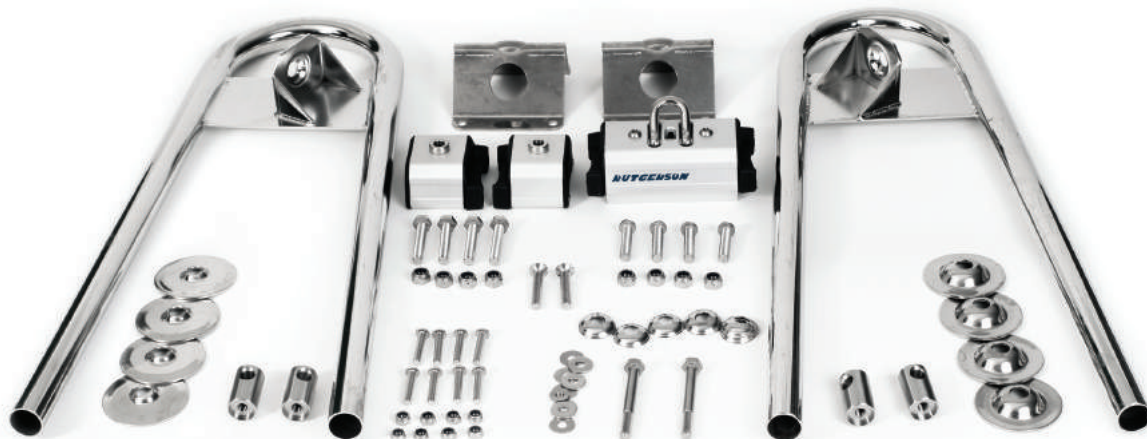
1. Measure the distance between the front of the mast and the headstay ("J" measurement).
2. The bending radius should be 95% of "J".
3. The radius can be altered from 3400mm to 3700mm by gently applying the full body weight onto the track with the upper surface facing down.



### How to choose Self-tacking System

Below you see which system we generally recommend, depending on the size of the boat.





Part no	Product description	Dimensions [mm]			Rec boat size	Included articles	Article description
		Length of track	Track Width	Radius			
<b>32mm Self-tacking Jib System</b>							
T690101	Self-tacking Jib System, up to 30ft*	2000	32	3400	Up to 30ft*	T390100 T601201 T610112 T620006	Self-tacking jib fittings 32mm track Extra short car with shackle Pair of fixed stoppers
T690103	Self-tacking Jib System, up to 40ft*	2000	32	3400	Up to 40ft*	T390100 T601201 T610001 T620006	Self-tacking jib fittings 32mm track Short car with shackle Pair of fixed stoppers
<b>50mm Self-tacking Jib System</b>							
T690191	Self-tacking Jib System, up to 50ft*	2000	50	4000	Up to 50ft*	T390190 T602201 T610900 T620906	Self-tacking jib fittings 50mm track Short car with shackle Pair of fixed stoppers

\* To be considered an approximate measure.



For more information, please visit [www.rutgerSON.se](http://www.rutgerSON.se)





## Made in Sweden since 1976

The Rutgeron company is a world leading manufacturer of yacht equipment, founded in 1976 by Swedish America's Cup sailor and entrepreneur Göran Rutgeron. Today the company is represented by distributors in more than 40 countries, but all our products are still made in Sweden as they always have been. For more information, please visit our website [www.rutgeron.se](http://www.rutgeron.se).



### Contact us

Visit: Mjölkekilsgatan 21, 442 66 Marstrand, Sweden

Call: +46 (0)303-20 66 50

Email: [postmaster@rutgeron.se](mailto:postmaster@rutgeron.se)

### Follow us

Facebook: [@rutgeronmarin](https://www.facebook.com/rutgeronmarin)

Instagram: [@rutgeronmarin](https://www.instagram.com/rutgeronmarin)

## GENERAL WARRANTY & KEY TERMS OF SUPPLY BY RUTGERSON MARIN AB

### A) Warranty

#### 1) Period of Warranty

Rutgerson Marin AB issues a general warranty time durable for three years against malfunction or breakage from the date of delivery.

#### 2) Warranty Coverage

Products sold by Rutgerson Marin AB and in normal and customary use, are conditionally warranted against malfunction or breakage. The warranty does not cover:

- i) Defects or damage resulting from use of the product in other than its normal and customary manner;
- ii) Defects or damage from misuse, accident or neglect;
- iii) Defects from improper testing, operation, maintenance, installation, alteration, modification or adjustment;
- iv) Damage from unauthorized repair or alterations;
- v) Damage from corrosive materials, ultra violet degradation, wear or tear beyond the specification of the case or enclosure.

#### 3) Warranty Procedure of Service or Replacement

Notice of a claim for defect, service or replacement covered by this limited warranty shall be made promptly and in writing to the local Rutgerson distributor that supplied the product or to Rutgerson Marin AB. Products returned for service or replacement under this limited warranty must be assigned a valid RGA Return Goods Authorization number by Rutgerson Marin AB. Unidentified and unauthorized goods returned to Rutgerson Marin AB will NOT be approved or eligible for further investigation.

The customer is responsible for undertaking all expenses associated with transporting the goods to and from Rutgerson Marin AB or the local Rutgerson distributor that supplied the product. If the investigation of the product and the warranty claim reveals that the defect, malfunction or breakage is not covered by this limited warranty, the customer will be contacted and advised with respect to additional cost in conjunction with service or replacement.

For approved RGA goods, please send these together with assigned RGA documents to:

WARRANTY GOODS  
Rutgerson Marin AB  
Mjölkekilsgatan 21  
SE-442 66 Marstrand  
SWEDEN

### B) Purchase on Approval

Rutgerson Marin AB issues a general purchase on approval period durable for 60 days after delivery. Products that are subject for return needs to be unused and delivered to Rutgerson Marin AB in their original packing and according to the procedure stated in section (A3) above. Returned products will thereafter be subject to investigation and upon approval a 15% handling fee of the original purchase amount will be surcharged to all eventual credits. For all customized or one-off items, purchase on approval does not apply.

### C) Supply

#### 1) Packing Quantity

Products are supplied in stated packing and minimum purchase quantities only. For supply in smaller and/or customized quantities, additional terms will apply. For further information about alternative supply conditions, please contact Rutgerson Marin AB.

#### 2) Delivery Time

All official delivery times endorsed by Rutgerson Marin AB are estimated and can be subject to changes. Rutgerson Marin AB is in the event of such related changes legislated to inform the customer.

#### 3) Unanticipated Defects & Delays

Rutgerson Marin AB shall not be liable for unanticipated defects/delays, nor shall it be liable for any damage, whether direct or indirect, beyond the provisions set forth above or otherwise provided to customers under statutory law legislation. In connection with delivery of incorrect or defective goods, the customer must promptly submit a complaint to Rutgerson Marin AB.

### D) Definitions

#### 1) Safe Working Load (SWL)

Is the maximum static and/or dynamic load at which the product will still function without excessive friction, distortion, wear or permanent deformation of its components. Above this load, systems may fail, moving parts may seize and stainless steel or plastic components may begin to bend, stretch or otherwise deform. SWL should never exceed 55% of the breaking load (BL), and should never be exceeded in use.

#### 2) Breaking Load (BL)

Is the load at, or around which, a major failure can be expected to occur to some part of the product's structure when new. Plastic components may split, rivets may give way, shackles may break and other metallic components may fracture. No product should be used at more than 55% of the breaking load.



## The Rutgerson original philosophy

It is my firm belief that innovator, designer or manufacturer of yacht fittings should know the open sea in really bad weather to understand what is going on.

The Rutgerson staff have been out there...

A handwritten signature in black ink, appearing to read 'Göran Rutgerson', written in a cursive style.

Göran Rutgerson - 1976

**RUTGERSON**  
*Best in action*

### Deck Hardware Distributor Network

Rutgerson Marin AB is represented on all continents by an impressive network of over 40 local distributors. All our distributors have a long tradition of serving our customers with

dedication and knowledge of our products and their demands.

For updated information about our distributors, please visit [www.rutgerson.se](http://www.rutgerson.se).

### Rutgerson Marin AB

Mjölkekilsgatan 21,  
SE-442 66 Marstrand, Sweden  
+46 (0)303-20 66 50,  
[postmaster@rutgerson.se](mailto:postmaster@rutgerson.se)